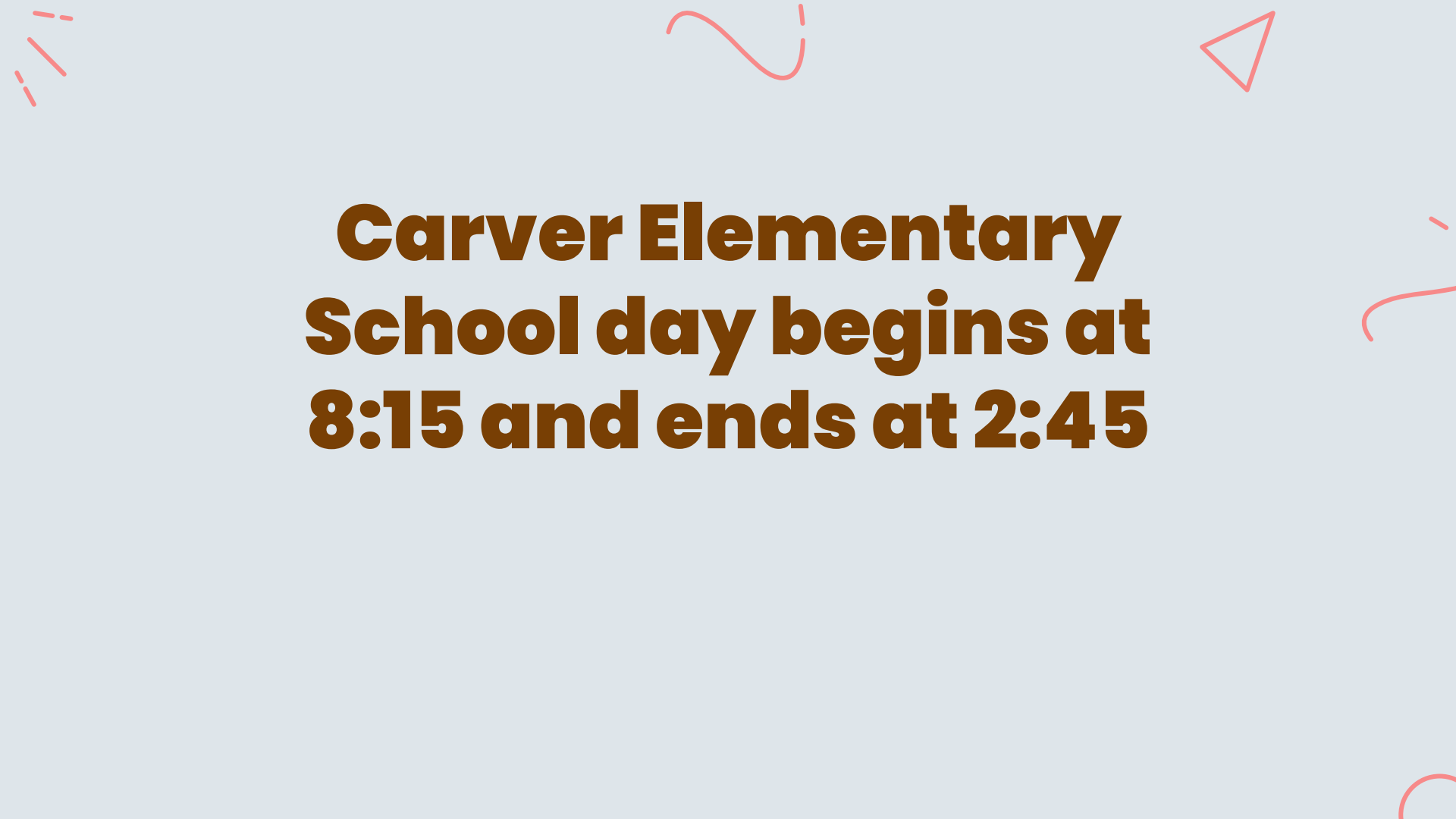




Carver Elementary Arrival and Dismissal

Fall 2023

The background is light blue with several decorative red elements: a dashed line in the top left, a wavy line at the top center, a triangle in the top right, and a curved line on the right side.

**Carver Elementary
School day begins at
8:15 and ends at 2:45**

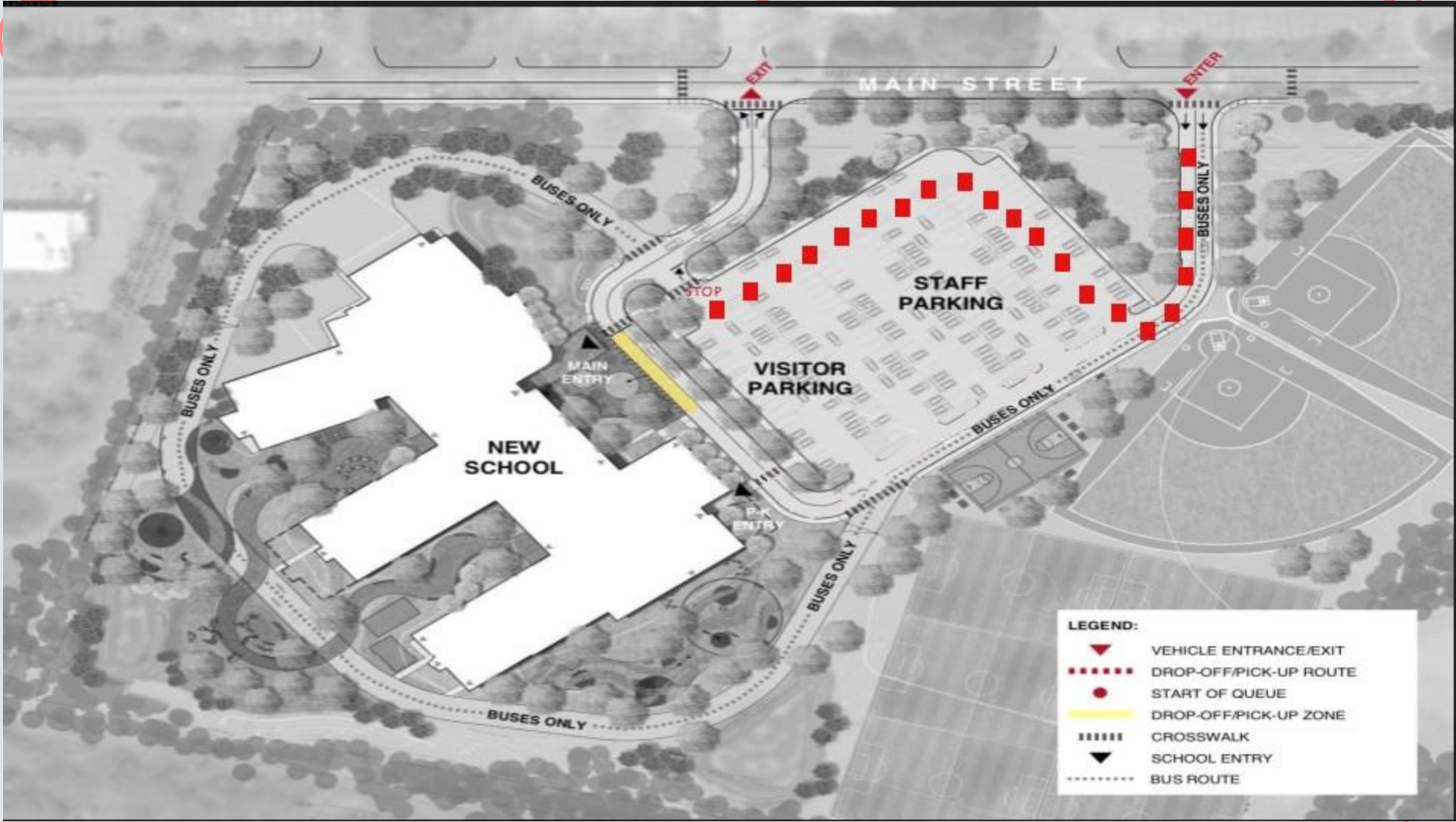
Arrival: Morning Drop-off Procedures

K-5

- Drop-off will take place from 8:00 - 8:15.
- Families should NOT line up for drop-off prior to 7:55.
- Drop-off ends at 8:15. Students arriving after 8:15, must be walked in by parent/guardian.
- There are 2 separate drop-off entrances. K-5 will use the Main Entrance. Preschool will use the Preschool door.
- Preschool drop-off begins at 8:15.
- For families with Preschool and older children you are asked to drop-off your preschooler first at 8:15 before proceeding to the Main Entrance to drop-off older children. It is understood that if you have a preschooler, your older child will not be considered late, so long as every effort is made to arrive promptly.

Morning Drop-off Procedures K-5, Continued

- Parent/Guardian **MUST** remain in vehicle.
- Students **MUST** be prepared to unload from the driver's side of the vehicle.
- Students may **NOT** unload unless they are in the designated drop-off zone (Yellow marked area in front of the school)
- Once in the drop-off line there is **NO** passing of any vehicles.
- You **MUST** yield to busses at all times.
- If you choose to park and not wait in line, you **MUST** use the crosswalk and escort your child across the driveway to the Main Entrance.
- If you arrive after 8:15 AM, you must park and walk your child into the school and sign them in.
- See the visual map on the next slide to help with understanding the line up at arrival time.



- LEGEND:**
- ▼ VEHICLE ENTRANCE/EXIT
 - DROP-OFF/PICK-UP ROUTE
 - START OF QUEUE
 - DROP-OFF/PICK-UP ZONE
 - ||||| CROSSWALK
 - ▼ SCHOOL ENTRY
 - BUS ROUTE



Carver Elementary Dismissal

Parent/Guardian PickUp/Coyote Car Riders

CES will be using PickUp Patrol to organize and safely dismiss students.

Families participating in Coyote Car Riders must:

- Complete a 2023-24 Car Rider Application form
- Display the Pick-up Pass issued by the school on their dash until they have picked-up their child
- Use PickUp Patrol to inform the school of scheduled pick-up days or changes
- Follow the directions of the staff
- Be prepared to show Identification if/when necessary
- Car Rider Application Form

Parent/Guardian Pick-up

Coyote Car Riders

Please arrive at the school no earlier than 2:40. Staff will be in the parking lot at that time to direct traffic and answer questions.

- Coyote Car Riders will begin at 2:45PM
- Coyote Car Riders will end at 3:00PM, for extenuating circumstances call the office.
- Preschool pick-up begins at 2:45. Parents/guardians park and go to the Preschool Entrance to dismiss their child.

Parent/Guardian Pick-up

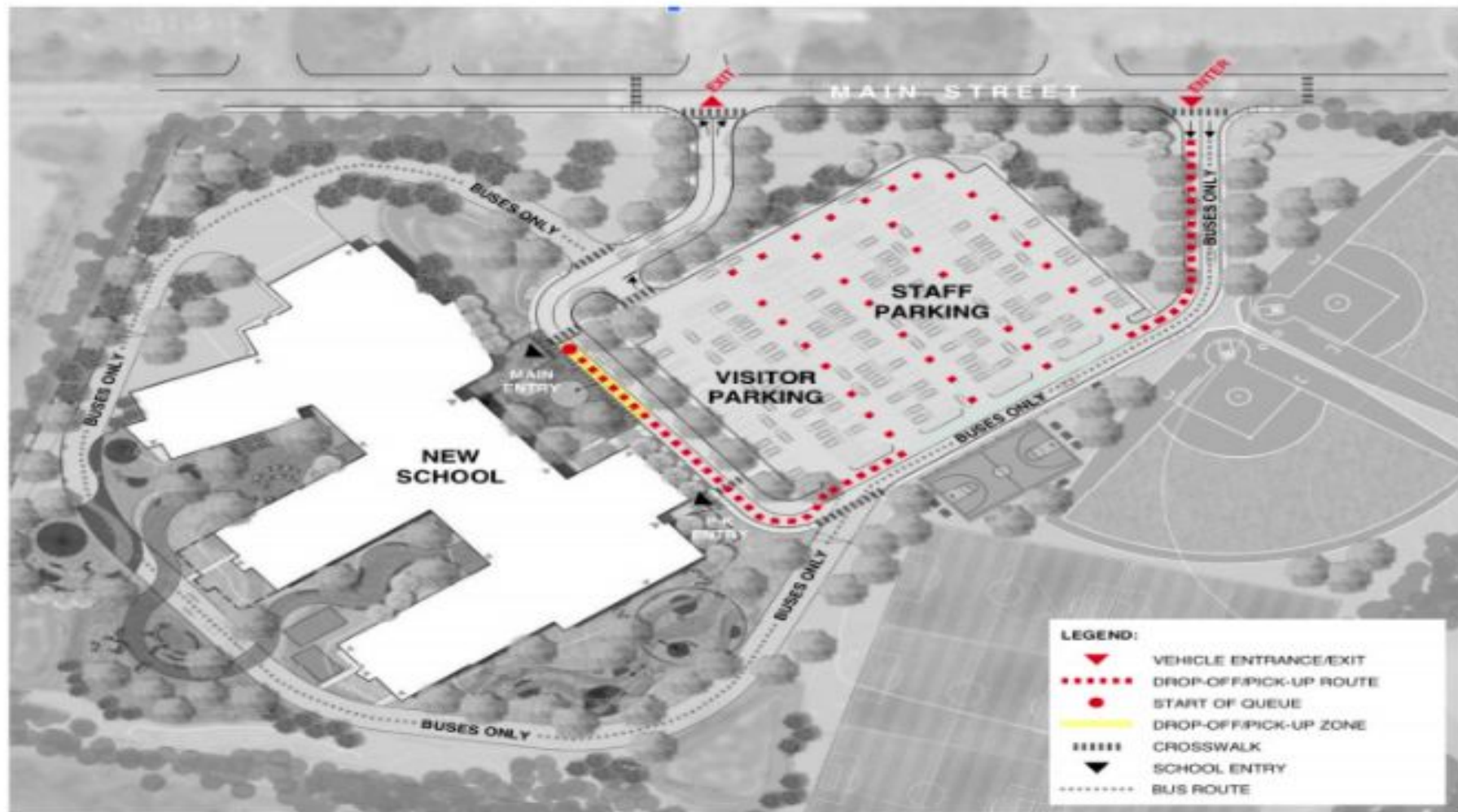
Be patient as we begin the new school year.

Your cooperation following the schedule is going to be instrumental in helping us to make this work as smoothly as possible for all our children.

Please note: It is important for you to complete the Car Rider Application Form, so that you will be issued a Pick-Up Pass for the 2023-24 school year.

We ask that you do not use a Pick Up Pass from a previous school year. Within 2-3 days from the start of school, we will issue pick up passes for all those who have filled out an application.

If you misplace your pick up pass, contact us and we will issue a replacement.



LEGEND:

	VEHICLE ENTRANCE/EXIT
	DROP-OFF/PICK-UP ROUTE
	START OF QUEUE
	DROP-OFF/PICK-UP ZONE
	CROSSWALK
	SCHOOL ENTRY
	BUS ROUTE

Occasional Parent Pick-up

- If you do not pick-up your child on a regular basis, you do not need to complete the Coyote Car Rider application form but you **MUST** notify the school through PickUp Patrol by 1:45 on the day you plan to dismiss a student..
- Plan to arrive at school between 2:40 and 3:00.
- You will check in with the Pick-up Attendant and you will be instructed to park.
- Once parked, head to the Main Entrance and check in with a faculty member who will request your license or photo ID and call for your child.

Dismissal - BUSES

- Students will wait in their classrooms until called.
- Busses will be announced over the intercom.
- Dismissal will be staggered with the younger students being called first.

Questions...

Please reach out to any of the school building administrators:

Principal: Ruby Maestas maestars@carver.org

Associate Principal Grades 3-5: Jessica Penella penellaj@carver.org

Associate Principal Grades Pk-2: Naomi Stahl stahln@carver.org