

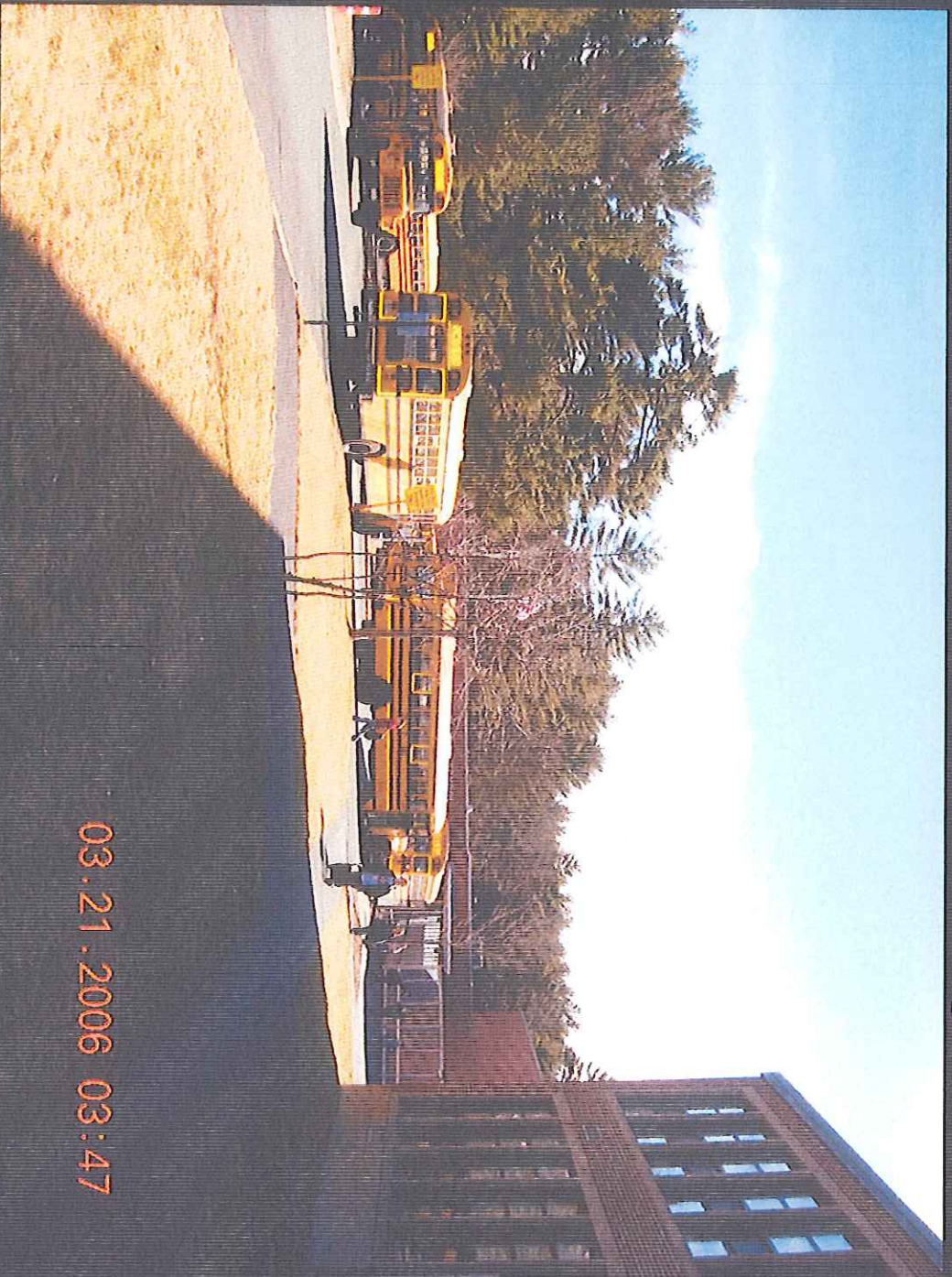
Primary/Elementary Site



Kingscott

CARVER PUBLIC SCHOOLS

Primary/Elementary Site



03.21.2006 03:47

Kingscott

CARVER PUBLIC SCHOOLS

Washburn Primary School



12.15.2005 00:25

Kingscott

CARVER PUBLIC SCHOOLS

Washburn Primary School



Kingscott

CARVER PUBLIC SCHOOLS

Washburn Primary School



Kingscott

CARVER PUBLIC SCHOOLS

Washburn Primary School



Kingscott

CARVER PUBLIC SCHOOLS

Typical Classroom Hallway

Washburn Primary School



Kingscott

CARVER PUBLIC SCHOOLS

IMC- Divided into Computer Lab.

Washburn Primary School



Kingscott

CARVER PUBLIC SCHOOLS

Specialist's Office

Washburn Primary School



Kingscott

CARVER PUBLIC SCHOOLS

Gymnasium

Washburn Primary School



Kingscott

CARVER PUBLIC SCHOOLS

Classroom on the stage

Washburn Primary School



Kingscott

CARVER PUBLIC SCHOOLS

Cafeteria

Washburn Primary School



Kingscott

CARVER PUBLIC SCHOOLS

Boiler Room

Washburn Primary School

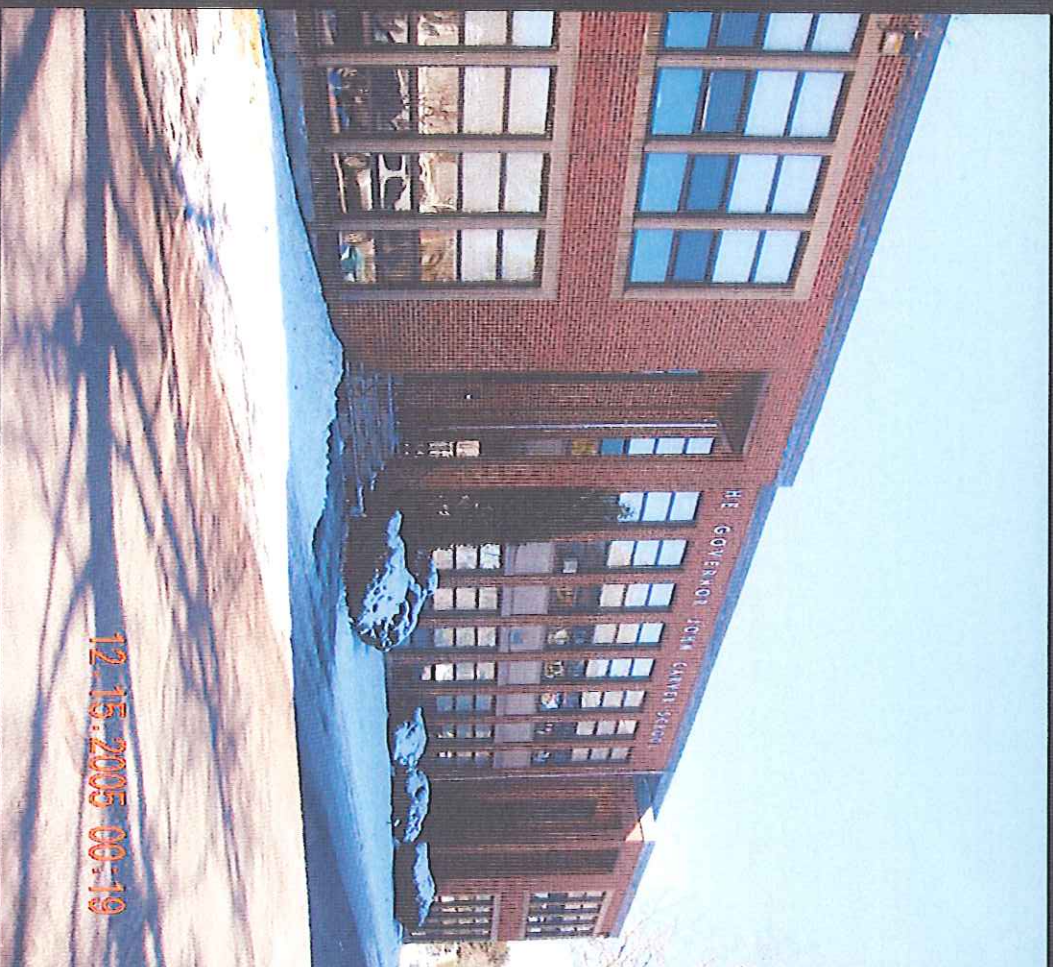


Kingscott

CARVER PUBLIC SCHOOLS

Roof Top Air Handling Unit

Gov. Carver Elementary



Kingscott

CARVER PUBLIC SCHOOLS

Gov. Carver Elementary



Kingscott

CARVER PUBLIC SCHOOLS

Gov. Carver Elementary



Kingscott

CARVER PUBLIC SCHOOLS

Administration Offices

Gov. Carver Elementary



Kingscott

CARVER PUBLIC SCHOOLS

Nurse's Office

Gov. Carver Elementary



Kingscott

CARVER PUBLIC SCHOOLS

Specialist's Office

Gov. Carver Elementary



Kingscott

CARVER PUBLIC SCHOOLS

Classroom Storage

Gov. Carver Elementary



Kingscott

CARVER PUBLIC SCHOOLS

Typical Corridor

Gov. Carver Elementary



03.20.2006 23:49

Kingscott

CARVER PUBLIC SCHOOLS

Storage Under Stair

Gov. Carver Elementary



Kingscott

CARVER PUBLIC SCHOOLS

Music Theatre Office

Gov. Carver Elementary



Kingscott

CARVER PUBLIC SCHOOLS

Gymnasium

Gov. Carver Elementary



Kingscott

CARVER PUBLIC SCHOOLS

Cafeteria

Gov. Carver Elementary

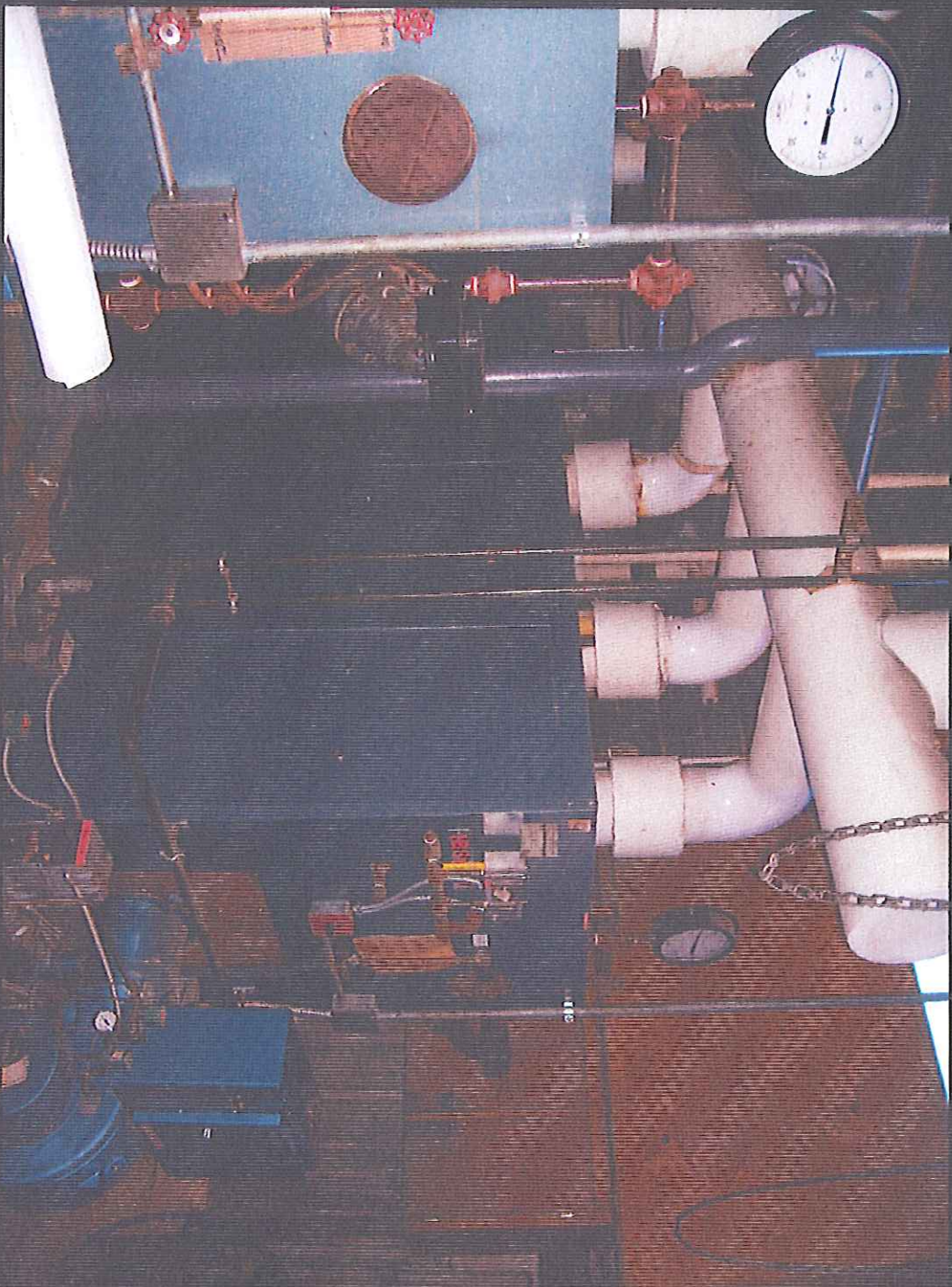


Kingscott

CARVER PUBLIC SCHOOLS

Toilet Room

Gov. Carver Elementary



Kingscott

CARVER PUBLIC SCHOOLS

Boiler Room