

Carver Elementary School

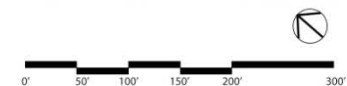


Carver School Building Committee Meeting
August 17th, 2015

Site Circulation Opt. 1



SITE PLAN



Site Circulation Opt. 1



- ➔— BUS CIRCULATION
- BUS DROP-OFF/PICK-UP ZONE
- PARENTS/VISITORS/STAFF VEHICULAR CIRCULATION
- PARENTS DROP-OFF/PICK-UP ZONE
- PRE-K PARKING



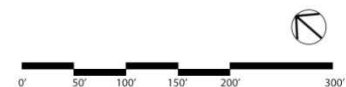
- ➔— SERVICE VEHICLE CIRCULATION

CIRCULATION DIAGRAMS

Site Circulation Opt. 2



SITE PLAN



Site Circulation Opt. 2



- ➔ BUS CIRCULATION
- BUS DROP-OFF/PICK-UP ZONE
- PARENTS/VISITORS/STAFF VEHICULAR CIRCULATION
- PARENTS DROP-OFF/PICK-UP ZONE
- PRE-K PARKING



- ➔ SERVICE VEHICLE CIRCULATION

CIRCULATION DIAGRAMS

Exteriors



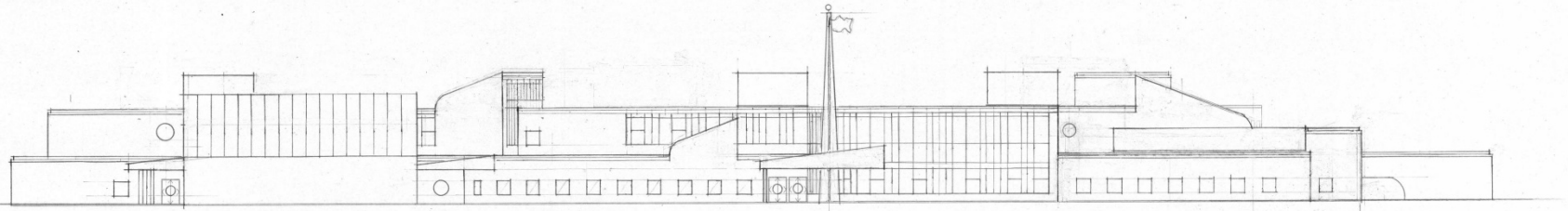
MASSING VIEW

Exteriors

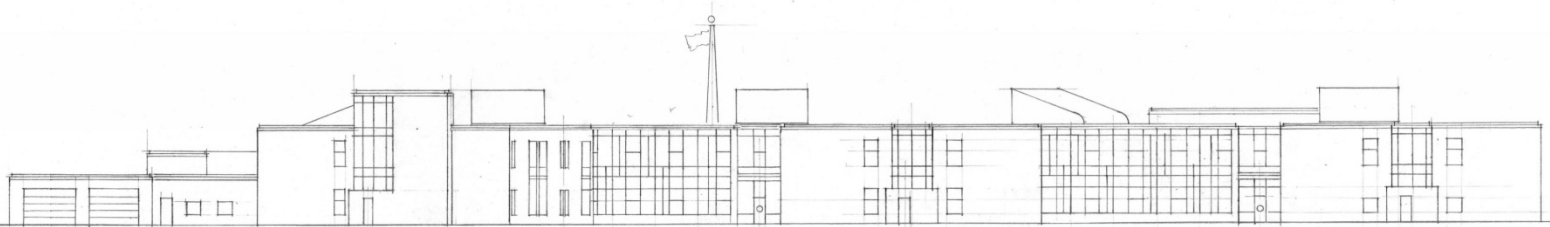


MAIN ENTRY VIEW

Exteriors



EAST (FRONT) ELEVATION



WEST (REAR) ELEVATION

Floor Plans



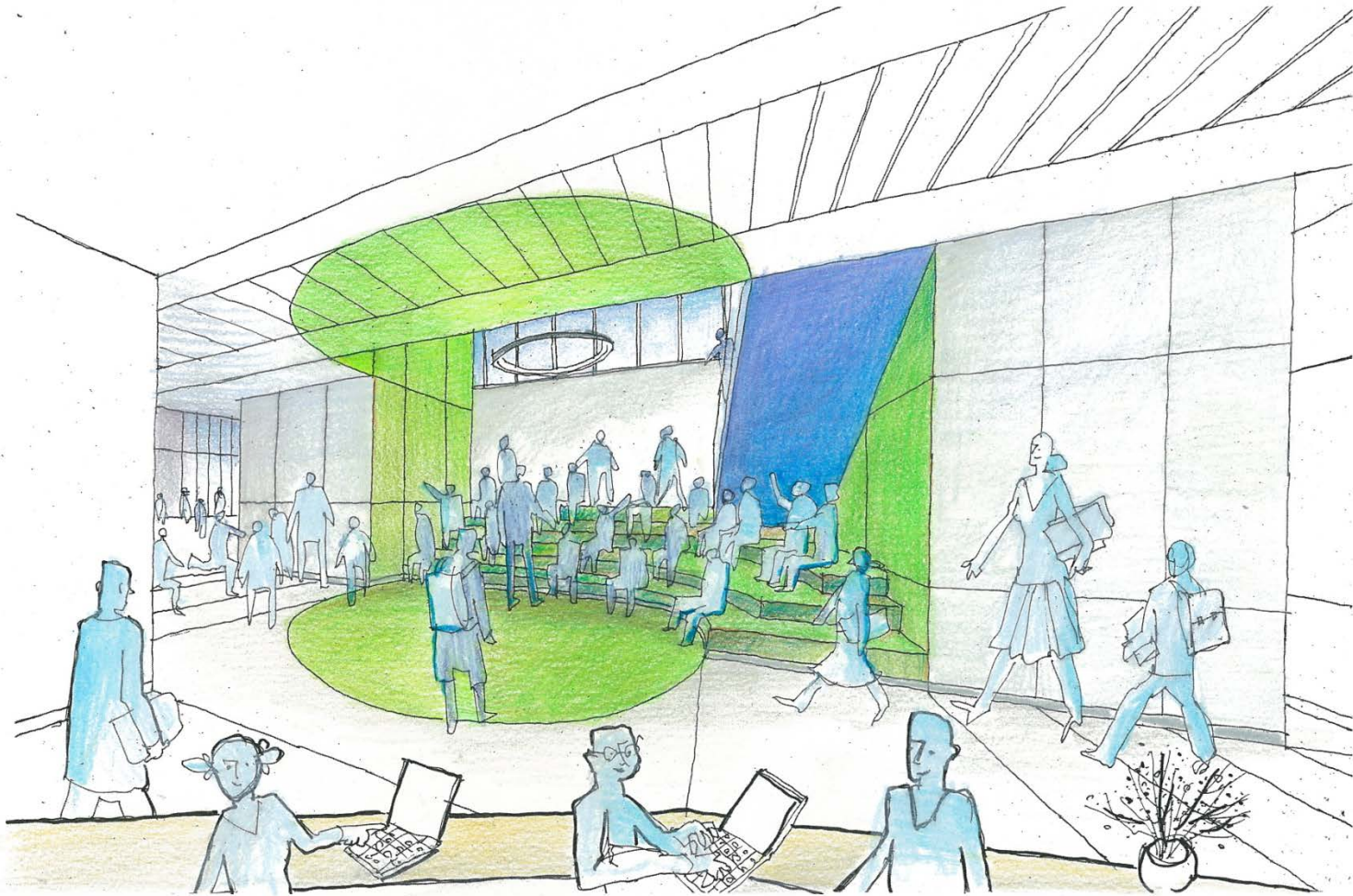
FIRST FLOOR PLAN

Floor Plans



SECOND FLOOR PLAN

Interior Spaces



GATHERING AREA IN LEARNING COMMONS

Interior Spaces



BOOK COLLECTION IN LEARNING COMMONS

This detailed floor plan illustrates the layout of a food service facility, including a kitchen, serving area, and cafeteria. The plan is annotated with numbered callouts (1-78) corresponding to the equipment list. Key areas include:

- Kitchen:** Features a large island with a sink, stove, and storage. Equipment includes a remote outdoor condensing unit (11), freezer (14), cooler (14), and various storage units (36x21, 42x21, 48x21).
- Serving Area:** Includes a serving line with two stations (SERVING LINE 1 and SERVING LINE 2) and a serving counter (75). Equipment includes a serving line (75), serving counter (75), and various storage units (36x21, 42x21, 48x21).
- Dining Area:** Labeled "CAFETERIA", it contains several round tables (74, 75, 76) and rectangular tables (77, 78) with chairs.
- Support Areas:** Includes a staff toilet, mop/lockers, office, and a tray wash area.

The plan also shows the location of various pieces of equipment, such as the remote outdoor condensing unit (11), freezer (14), cooler (14), and various storage units (36x21, 42x21, 48x21).

Recent Updates:

- Well Water Test Results Received.
- Mass Historical Response Received.
- Response to MSBA Requested Program Clarifications Submitted.
- HMFH Engaged JC Engineering to Create Existing Conditions Plan & Flag Wetlands.
- Geo-technical & Geo-environmental Investigations Scheduled (McPhail).

Next Steps:

- 3/25/15 – SBC Approve Preferred Option
- 4/13/15 – SBC Approve Preferred Schematic Report for Submission to MSBA
- 5/13/15 – MSBA Facilities Assessment Subcommittee
- 6/3/15 – MSBA Board Approval to Proceed into Schematic Design (Conditional Approval*)
- 6/30/15 – FAS PSR Supplemental Info Due*
- 8/17/15 – SBC Meeting: (Exterior Elevations & Materials, Green Discussion & Lifecycle Cost Analysis, Electrical & Lighting, Kitchen Design)

- 8/24/15 – Schematic Design sent to Estimators
- 8/31/15 – **SBC Meeting:** CM @ Risk Discussion, Design Briefing & VM Option Discussion
- 9/8/15 – **SBC Meeting:** Review Estimates & Approve VM Options
- 9/17/15 – Schematic Estimates/Budget Due to MSBA
- 10/1/15 – Schematic Design Submittal to MSBA
- 11/18/15 – MSBA Board Approval of Schematic Design
- **TBD – Carver Town Meeting/Vote on Project Funding**

Community Outreach:

- Old Home Day – Takeaways:
 - Mostly positive feedback
 - Many people unaware that project still required voter approval to proceed
 - Some people concerned about being out of Town during vote
 - Only about half of residents have access to local cable programming
 - Obvious need to provide outreach to 'get the vote out'
- National Night Out – August 4th – Update?
- Mobile Home Park, Presentation to Board – Update?
- PAC Group Organization:
 - Raise Funds to Educate Community (Flyers, Mailings, Signs, etc)
- Local Cable Project Updates
- Chance Court Outreach – (after Design more detailed)
- Farmers Market (September)

Discussion / Questions?

Carver School Building Committee Meeting
August 17th, 2015

