

# Carver Elementary School



Carver School Building Committee Meeting  
July 7<sup>th</sup>, 2015

# PSR Update

June 30, 2015

RE: Preferred Schematic Report Supplement for Carver  
Elementary School Project

Dear Mr. Chris Alles:

In accordance with the MSBA's Feasibility Study Submittal Procedures, PMA has reviewed and coordinated the materials contained within the attached Carver Elementary School Project's Preferred Schematic Report supplemental information submittal.

PMA finds the submittal to be complete, and has verified conformity to MSBA requirements, specifically those outlined in the MSBA Board Action Letter dated June 3, 2015.

Attached to this letter you will find the following:

- Further developed plans as requested, including further graphic clarity to tie program elements into the floor plans. Please see Attachment A for the refined floor plans.



25 Braintree  
Office Hill Park  
Suite 303  
Braintree, MA  
02184

Tel: 781.794.1404

Fax: 781.794.1405

# PSR Update - Continued

- There have been some minor revisions to the Space Summary Template. These have arisen through recent communications with the client and are noted in yellow on the space summary. Most relevant, we are currently showing the Multi-purpose room under the Cafeteria line item. This is because the Multi-purpose area will provide overflow seating for the Cafeteria if and when the need should arise. We have also revised the Media Center category of spaces to reflect the development of the Learning Commons. The updated Space Summary is included as Attachment B.
- The Educational Program has been revised to address redundancies and provide additional clarity. The revised Education Plan is included as Attachment C. All changes are in yellow, you will note that some of the changes are merely to address typos. Changes that respond to the MSBA's specific concerns noted in the June 3, 2015 Board Action Letter are as follows:

# Well Investigation

- Exploratory Drilling Performed
- Test Drilling and Water Samples Taken
- Lab Results Received

## NEXT STEPS

- JC Engineering to Compile WS13 Application
- DEP to Review all Recorded/Submitted Information
- Pumping Test to be Performed

# Floor Plans – Option C1 - Revised



FIRST FLOOR PLAN



SECOND FLOOR PLAN





# Site Plan – Option C1 - Revised

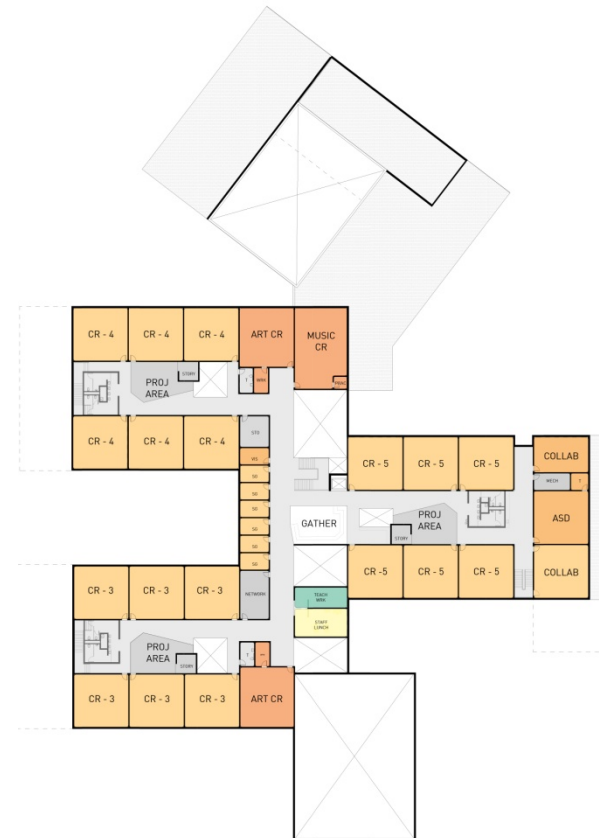




# Floor Plans – Option 5



FIRST FLOOR PLAN



SECOND FLOOR PLAN





# Site Plan – Option 5



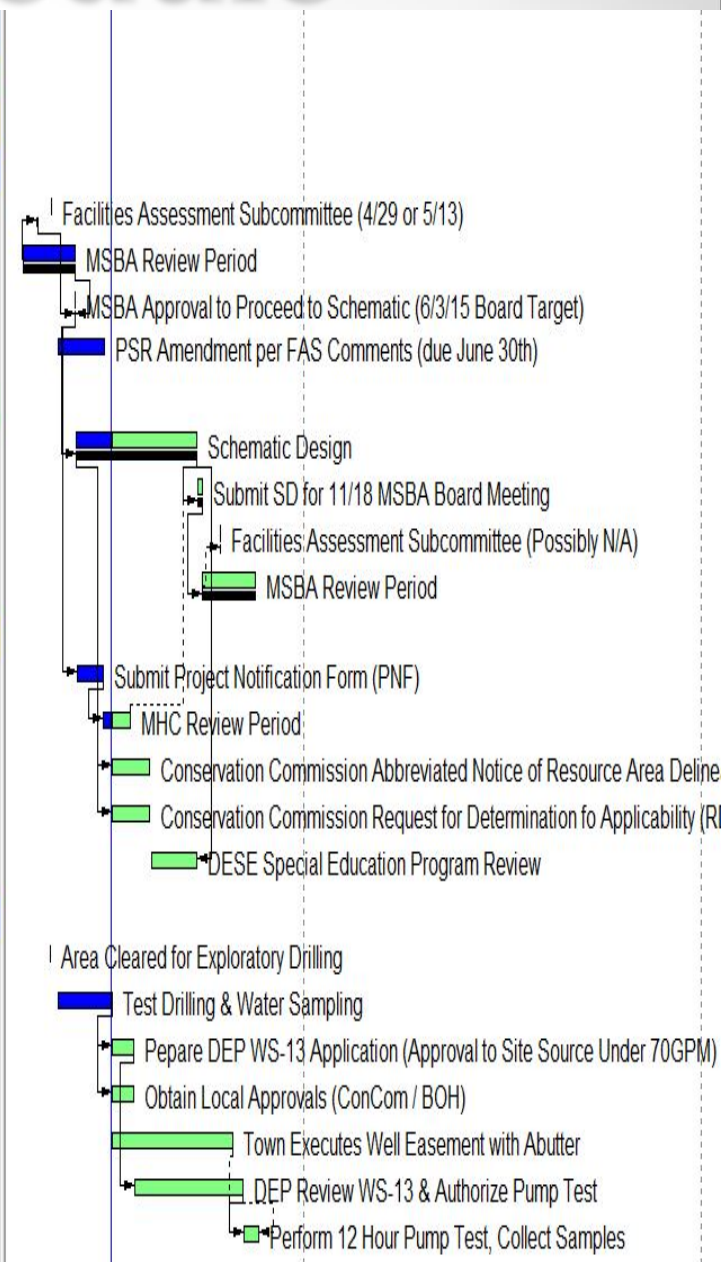
SITE PLAN

# MSBA - KEY DATES

- 3/10/15 – SBC Meeting - SBC Selection of Preferred Schematic Option
- 3/25/15 – SBC Approve Preferred Option
- 4/1/15 – Preferred Option Estimate to MSBA
- 4/09/15 – SBC Approve Preferred Schematic Report for Submission to MSBA
- 4/29/15 or 5/13/15 Facilities Assessment Subcommittee
- 6/3/15 – MSBA Board Approval to Proceed into Schematic Design
- 6/30/15 – PSR Amendment Submittal to MSBA
- 9/17/15 – Schematic Estimates/Budget Due to MSBA
- 10/1/15 – Schematic Design Submittal to MSBA
- 11/18/15 – MSBA Board Approval of Schematic Design
- 12/2/15 – Carver Town Meeting/Vote on Project Funding

# Detailed Schedule

Carver Elementary School Master Schedule		156	16-Apr-15 A	19-Nov-15
Feasibility Study / Preferred Option for Schematic (MSBA Module 3)		35	16-Apr-15 A	30-Jun-15 A
Preferred Schematic Report		35	16-Apr-15 A	30-Jun-15 A
PSR Submission		35	16-Apr-15 A	30-Jun-15 A
A1740	Facilities Assessment Subcommittee (4/29 or 5/13)	1	13-May-15 A	13-May-15 A
A1720	MSBA Review Period	35	16-Apr-15 A	03-Jun-15 A
A1730	MSBA Approval to Proceed to Schematic (6/3/15 Board Target)	1	03-Jun-15 A	03-Jun-15 A
A2200	PSR Amendment per FAS Comments (due June 30th)	5	18-May-15 A	30-Jun-15 A
Schematic Design (MSBA Module 4)		139	11-May-15 A	19-Nov-15
A1750	Schematic Design	80	04-Jun-15 A	23-Sep-15
A1760	Submit SD for 11/18 MSBA Board Meeting	3	24-Sep-15	28-Sep-15
A1766	Facilities Assessment Subcommittee (Possibly N/A)	1	15-Oct-15*	15-Oct-15
A1765	MSBA Review Period	35	29-Sep-15	16-Nov-15
Schematic Phase Permitting		139	11-May-15 A	19-Nov-15
A2120	Submit Project Notification Form (PNF)	5	05-Jun-15 A	29-Jun-15 A
A2130	MHC Review Period	20	29-Jun-15 A	24-Jul-15
A2140	Conservation Commission Abbreviated Notice of Resource Area Delineation (ANRAD)	25	07-Jul-15	10-Aug-15
A2150	Conservation Commission Request for Determination of Applicability (RDA) - LIKELY NOT APF	25	07-Jul-15	10-Aug-15
A2160	DESE Special Education Program Review	30	13-Aug-15	23-Sep-15
Public Water System Permitting		139	11-May-15 A	19-Nov-15
A2010	Area Cleared for Exploratory Drilling	1	11-May-15 A	11-May-15 A
A2020	Test Drilling & Water Sampling	11	18-May-15 A	07-Jul-15
A2030	Prepare DEP WS-13 Application (Approval to Site Source Under 70GPM)	15	07-Jul-15	27-Jul-15
A2040	Obtain Local Approvals (ConCom / BOH)	15	07-Jul-15	27-Jul-15
A2000	Town Executes Well Easement with Abutter	80	07-Jul-15	26-Oct-15
A2050	DEP Review WS-13 & Authorize Pump Test	73	28-Jul-15	05-Nov-15
A2060	Perform 12 Hour Pump Test, Collect Samples	10	06-Nov-15	19-Nov-15





# Next Steps

- Community Outreach
- ~~Mass Historic Project Notification Form~~
- ~~Submit PSR Update by 6/30/15~~
- ~~Develop List of Owners Project Requirements~~
- Town Department Meetings – *Meeting #2 Held 7/7/15*
- Utility Analysis
- DEP Well Approval
- Geotechnical/Geo-Environmental Investigations
- Cost Updates as Design Evolves

# Discussion / Questions?

Carver School Building Committee Meeting  
July 7<sup>th</sup>, 2015

