

Carver Elementary School



Carver School Building Committee Meeting
March 23rd, 2015

General Updates

PDP Feedback

From MSBA

- Response Due 3/30/15
 - Educational Space
 - Town Budget Reports
 - Schedules
 - Preliminary Cost Investigations

Well Investigations

- JC Engineering Contract
- DEP Feedback
- Testing Schedule

Academic Plan Update

- Space Summary Overview



Space Needs

Carver Elementary School

Whole Class Reading Grade 1



Carver Elementary School in the Erwin K Washburn

This is an OPEN PLAN Building

No Walls

Furniture and Cabinets define the learning spaces

Small Group Intervention Spaces are defined by the moveable furniture and cabinets in classrooms, the library, and in hallways

In the proposed building these spaces will be defined by walls

6 Grade 1 Classrooms which include 2 Inclusion classes



6 Classroom Intervention Groups (11-30 students)



16 small group intervention



16 groups with 5-9 students



Reading Intervention Specialists meet their students in their Pod and take them to the small group spaces



Students work on discreet skills in reading for 45 minutes each day



Skills include: Fluency, Phonemes, Phonics, Blending



Segmenting, High Frequency Words,



Word Level Automaticity



Accuracy, Appropriate Pace, Prosody



Vocabulary, Context Clues



Simultaneously in Grade 4 there is a 75 minute Math Block with 30 minutes of whole class instruction



45 minutes of Math Workshop in Small Groups with 2 or three groups in the classroom



One group is working with the teacher on direct instruction and two other groups are independent



Independent group work on a math skill



Some groups meet in the hallway



Math Intervention Groups meet in the GJC Cafeteria



Title I Math Intervention Specialists meet groups in the GJC Cafeteria



There are 6 Math Intervention Groups with 6-9 students in each group in the GJC Cafeteria



Every Block in the Schedule

6 Classroom Reading Intervention Groups

12 Small Group Reading Intervention Groups

6 Classroom Mathematics Intervention Groups

6 Small Group Mathematics Intervention Groups

Total of 12 Classroom Intervention Groups

Total of 18 Small Group Intervention Groups

Are meeting simultaneously for Reading and Mathematics

Preliminary Building/Site Option A – Add/Reno

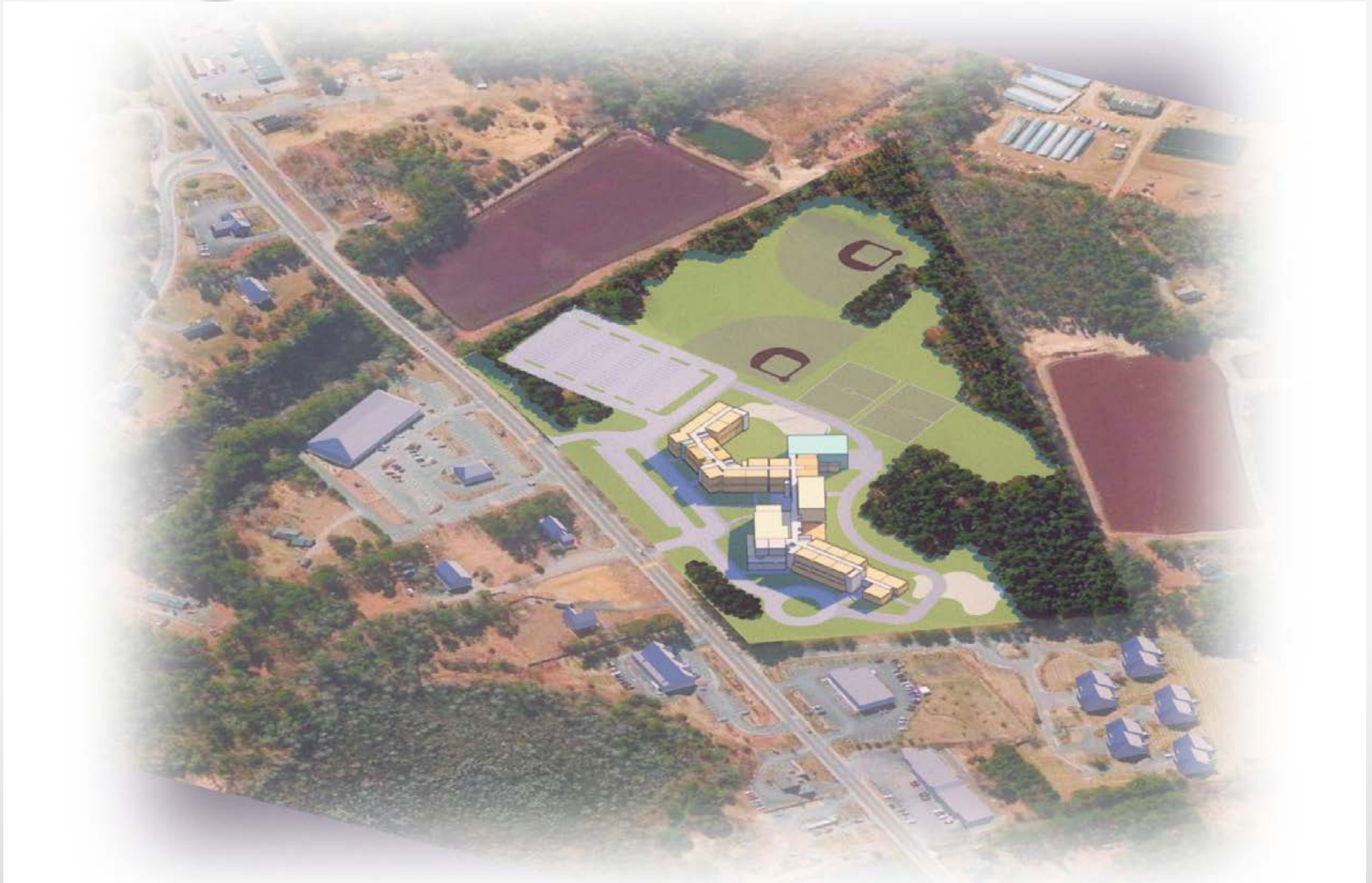


SITE PLAN/FIRST FLOOR PLAN



SECOND FLOOR PLAN

Preliminary Building/Site Option A – Add/Reno



Preliminary Building/Site Option C1 – N.C.



SITE PLAN/FIRST FLOOR PLAN



SECOND FLOOR PLAN

Preliminary Building/Site Option C1 – N.C.



Preliminary Building/Site Option C2 – N.C.



SITE PLAN/FIRST FLOOR PLAN



SECOND FLOOR PLAN

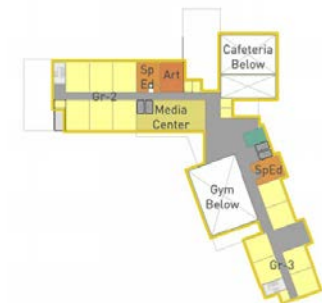
Preliminary Building/Site Option C2 – N.C.



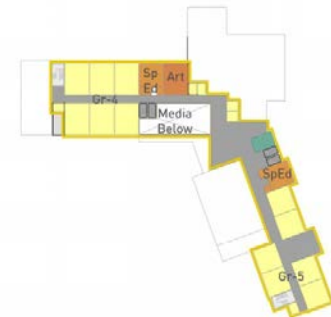
Preliminary Building/Site Option E1 – N.C.



SITE PLAN/FIRST FLOOR PLAN



SECOND FLOOR PLAN



THIRD FLOOR PLAN

Preliminary Building/Site Option E1 – N.C.



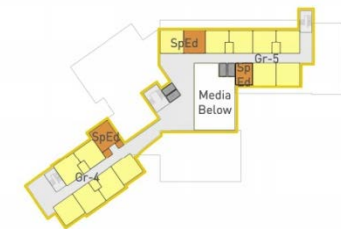
Preliminary Building/Site Option E2 – N.C.



SITE PLAN/FIRST FLOOR PLAN

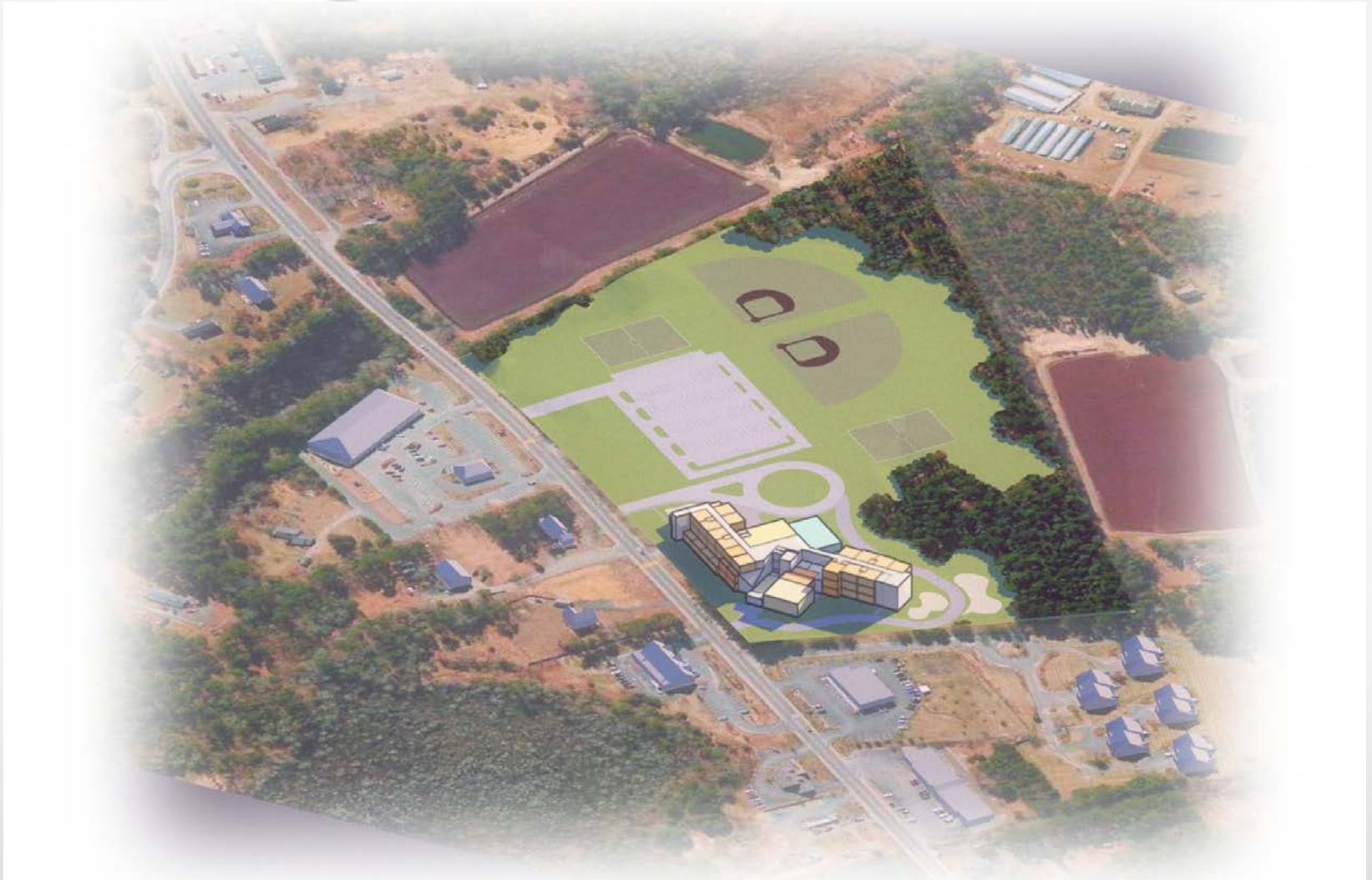


SECOND FLOOR PLAN

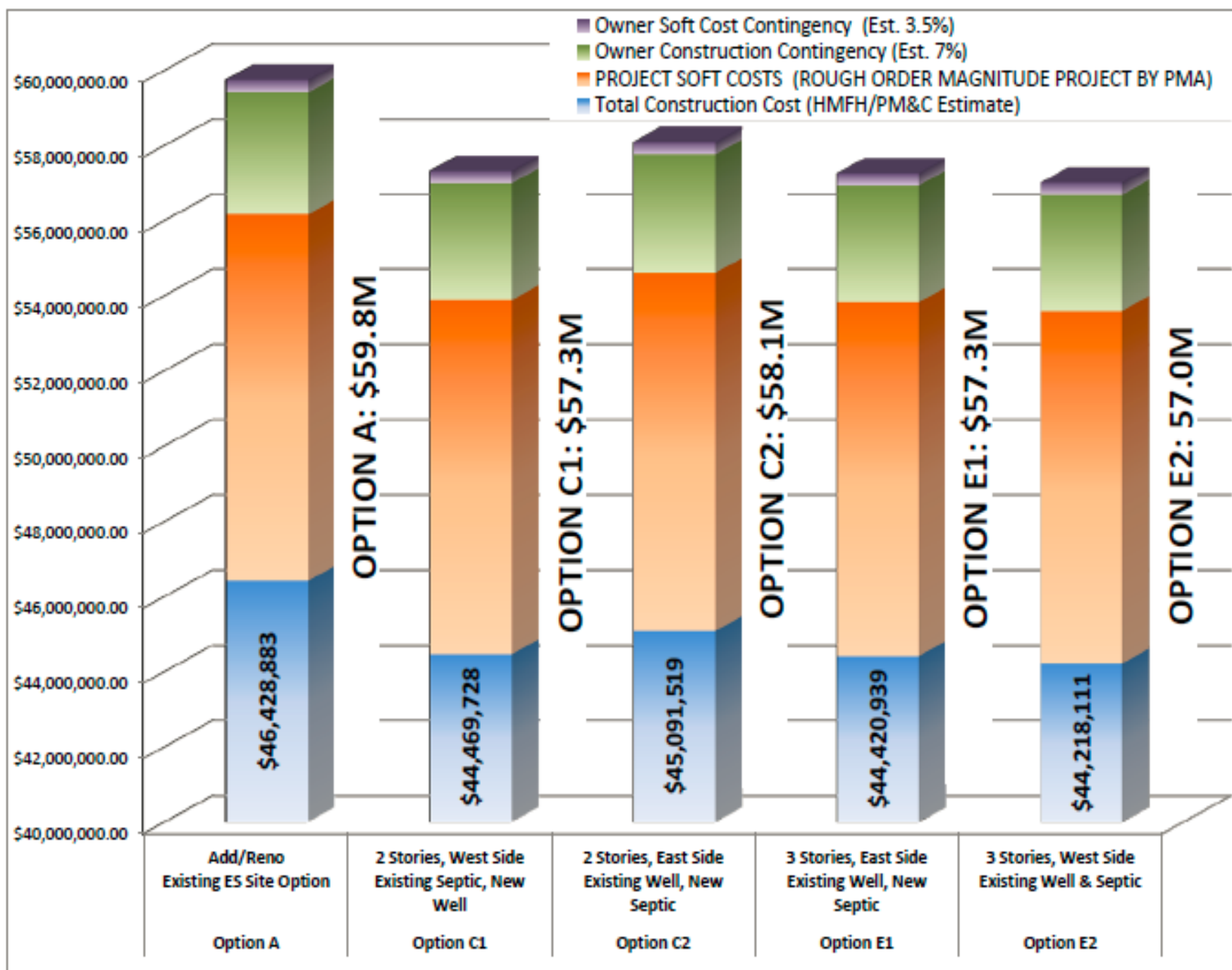


THIRD FLOOR PLAN

Preliminary Building/Site Option E2 – N.C.



Preliminary Site/Build Options Cost Variables

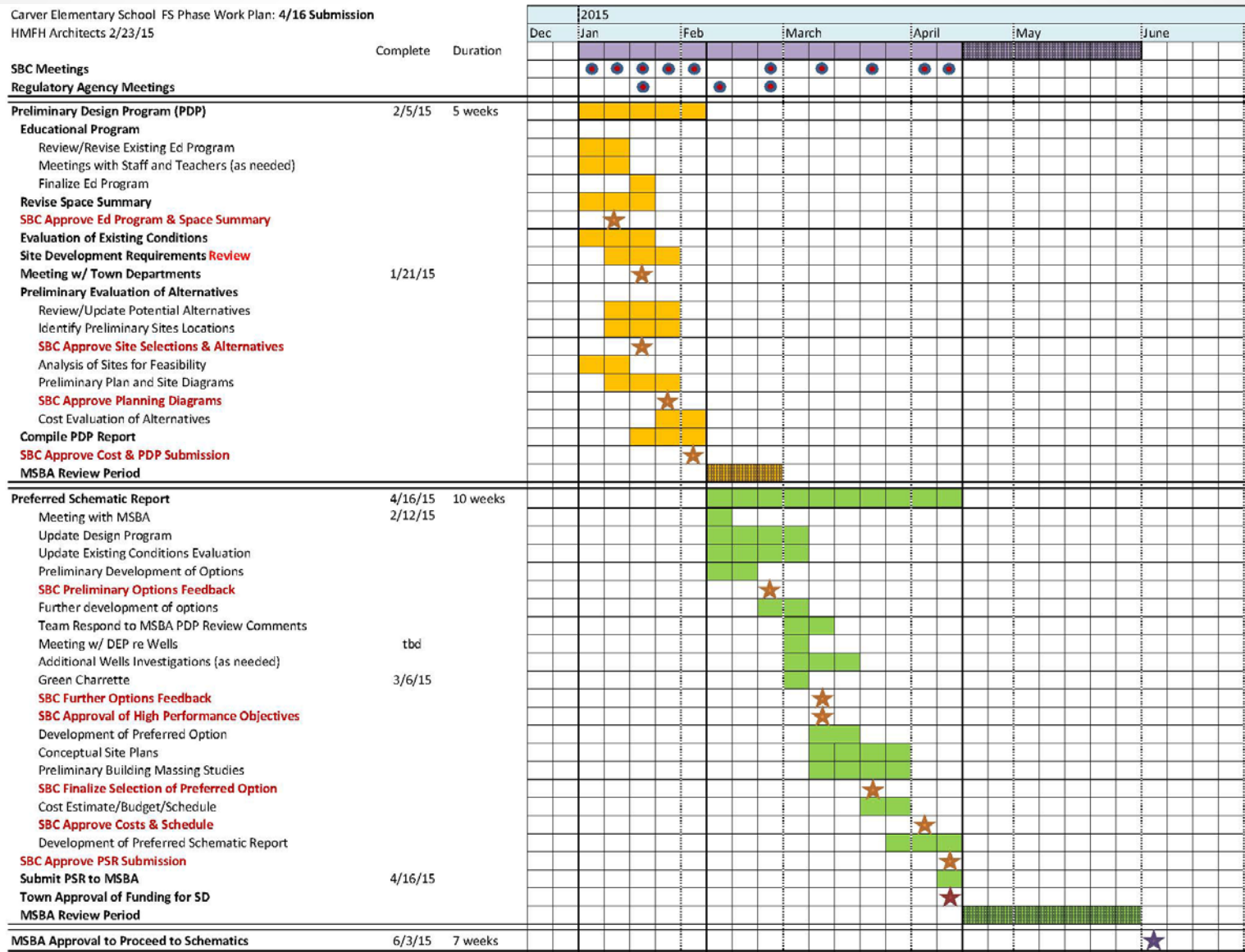


MSBA - KEY DATES

- 3/10/15 – SBC Meeting - SBC Selection of Preferred Schematic Option
- 3/25/15 – SBC Approve Preferred Option
- 4/1/15 – Preferred Option Estimate to MSBA
- 4/13/15 – SBC Approve Preferred Schematic Report for Submission to MSBA
- 4/29/15 or 5/13/15 Facilities Assessment Subcommittee
- 6/3/15 – MSBA Board Approval to Proceed into Schematic Design
- 9/28/15 – Schematic Design Submittal to MSBA
- 11/18/15 – MSBA Board Approval of Schematic Design
- 12/2/15 – Carver Town Meeting/Vote on Project Funding

Workplan Update

Carver Elementary School FS Phase Work Plan: 4/16 Submission
HMFH Architects 2/23/15



Detailed Schedule

Activity ID	Activity Name	Original Duration	Start	Finish	F	M	A	M	J	J	A	S	O	N	D	J
					1	2	0	0	1	2	0	0	1	2	0	1
					0	1	2	0	0	1	2	0	0	1	2	0
					1	2	0	0	1	2	0	0	1	2	0	1
					2	0	0	1	2	0	0	1	2	0	1	2
					3	0	1	2	0	0	1	2	0	0	1	2
					4	0	1	2	0	0	1	2	0	0	1	2
					5	0	1	2	0	0	1	2	0	0	1	2
					6	0	1	2	0	0	1	2	0	0	1	2
					7	0	1	2	0	0	1	2	0	0	1	2
					8	0	1	2	0	0	1	2	0	0	1	2
					9	0	1	2	0	0	1	2	0	0	1	2
					10	0	1	2	0	0	1	2	0	0	1	2
					11	0	1	2	0	0	1	2	0	0	1	2
					12	0	1	2	0	0	1	2	0	0	1	2
					13	0	1	2	0	0	1	2	0	0	1	2
					14	0	1	2	0	0	1	2	0	0	1	2
					15	0	1	2	0	0	1	2	0	0	1	2
					16	0	1	2	0	0	1	2	0	0	1	2
					17	0	1	2	0	0	1	2	0	0	1	2
					18	0	1	2	0	0	1	2	0	0	1	2
					19	0	1	2	0	0	1	2	0	0	1	2
					20	0	1	2	0	0	1	2	0	0	1	2
					21	0	1	2	0	0	1	2	0	0	1	2
					22	0	1	2	0	0	1	2	0	0	1	2
					23	0	1	2	0	0	1	2	0	0	1	2
					24	0	1	2	0	0	1	2	0	0	1	2
					25	0	1	2	0	0	1	2	0	0	1	2
					26	0	1	2	0	0	1	2	0	0	1	2
					27	0	1	2	0	0	1	2	0	0	1	2
					28	0	1	2	0	0	1	2	0	0	1	2
					29	0	1	2	0	0	1	2	0	0	1	2
					30	0	1	2	0	0	1	2	0	0	1	2
					31	0	1	2	0	0	1	2	0	0	1	2
					32	0	1	2	0	0	1	2	0	0	1	2
					33	0	1	2	0	0	1	2	0	0	1	2
					34	0	1	2	0	0	1	2	0	0	1	2
					35	0	1	2	0	0	1	2	0	0	1	2
					36	0	1	2	0	0	1	2	0	0	1	2
					37	0	1	2	0	0	1	2	0	0	1	2
					38	0	1	2	0	0	1	2	0	0	1	2
					39	0	1	2	0	0	1	2	0	0	1	2
					40	0	1	2	0	0	1	2	0	0	1	2
					41	0	1	2	0	0	1	2	0	0	1	2
					42	0	1	2	0	0	1	2	0	0	1	2
					43	0	1	2	0	0	1	2	0	0	1	2
					44	0	1	2	0	0	1	2	0	0	1	2
					45	0	1	2	0	0	1	2	0	0	1	2
					46	0	1	2	0	0	1	2	0	0	1	2
					47	0	1	2	0	0	1	2	0	0	1	2
					48	0	1	2	0	0	1	2	0	0	1	2
					49	0	1	2	0	0	1	2	0	0	1	2
					50	0	1	2	0	0	1	2	0	0	1	2
					51	0	1	2	0	0	1	2	0	0	1	2
					52	0	1	2	0	0	1	2	0	0	1	2
					53	0	1	2	0	0	1	2	0	0	1	2
					54	0	1	2	0	0	1	2	0	0	1	2
					55	0	1	2	0	0	1	2	0	0	1	2
					56	0	1	2	0	0	1	2	0	0	1	2
					57	0	1	2	0	0	1	2	0	0	1	2
					58	0	1	2	0	0	1	2	0	0	1	2
					59	0	1	2	0	0	1	2	0	0	1	2
					60	0	1	2	0	0	1	2	0	0	1	2
					61	0	1	2	0	0	1	2	0	0	1	2
					62	0	1	2	0	0	1	2	0	0	1	2
					63	0	1	2	0	0	1	2	0	0	1	2
					64	0	1	2	0	0	1	2	0	0	1	2
					65	0	1	2	0	0	1	2	0	0	1	2
					66	0	1	2	0	0	1	2	0	0	1	2
					67	0	1	2	0	0	1	2	0	0	1	2
					68	0	1	2	0	0	1	2	0	0	1	2
					69	0	1	2	0	0	1	2	0	0	1	2
					70	0	1	2	0	0	1	2	0	0	1	2
					71	0	1	2	0	0	1	2	0	0	1	2
					72	0	1	2	0	0	1	2	0	0	1	2
					73	0	1	2	0	0	1	2	0	0	1	2
					74	0	1	2	0	0	1	2	0	0	1	2
					75	0	1	2	0	0	1	2	0	0	1	2
					76	0	1	2	0	0	1	2	0	0	1	2
					77	0	1	2	0	0	1	2	0	0	1	2
					78	0	1	2	0	0	1	2	0	0	1	2
					79	0	1	2	0	0	1	2	0	0	1	2
					80	0	1	2	0	0	1	2	0	0	1	2
					81	0	1	2	0	0	1	2	0	0	1	2
					82	0	1	2	0	0	1	2	0	0	1	2
					83	0	1	2	0	0	1	2	0	0	1	2
					84	0	1	2	0	0	1	2	0	0	1	2
					85	0	1	2	0	0	1	2	0	0	1	2
					86	0	1	2	0	0	1	2	0	0	1	2
					87	0	1	2	0	0	1	2	0	0	1	2
					88	0	1	2	0	0	1	2	0	0	1	2
					89	0	1	2	0	0	1	2	0	0	1	2
					90	0	1	2	0	0	1	2	0	0	1	2
					91	0	1	2	0	0	1	2	0	0	1	2
					92	0	1	2	0	0	1	2	0	0	1	2
					93	0	1	2	0	0	1	2	0	0	1	2
					94	0	1	2	0	0	1	2	0	0	1	2
					95	0	1	2	0	0	1	2	0	0	1	2
					96	0	1	2	0	0	1	2	0	0	1	2
					97	0	1	2	0	0	1	2	0	0	1	2
					98	0	1	2	0	0	1	2	0	0	1	2
					99	0	1	2	0	0	1	2	0	0	1	2
					100	0	1	2	0	0	1	2	0	0	1	2

Public Comment Period on Proposed Options

SBC Discussion

- Identify Top 3 (Three) Options for Submittal of Preferred Schematic

Discussion / Questions?

Carver School Building Committee Meeting
March 23rd, 2015

