

Added Value
for
Carver Public Schools

The Year in Review:
January 2008-January 2009

Free full-day kindergarten hard to find on South Shore

Fourteen of 24 South Shore school districts offer some form of full-day kindergarten, but only five – Carver, Halifax, Hull, Kingston, Stoughton and Quincy – provide it free to every student.

BY THE NUMBERS

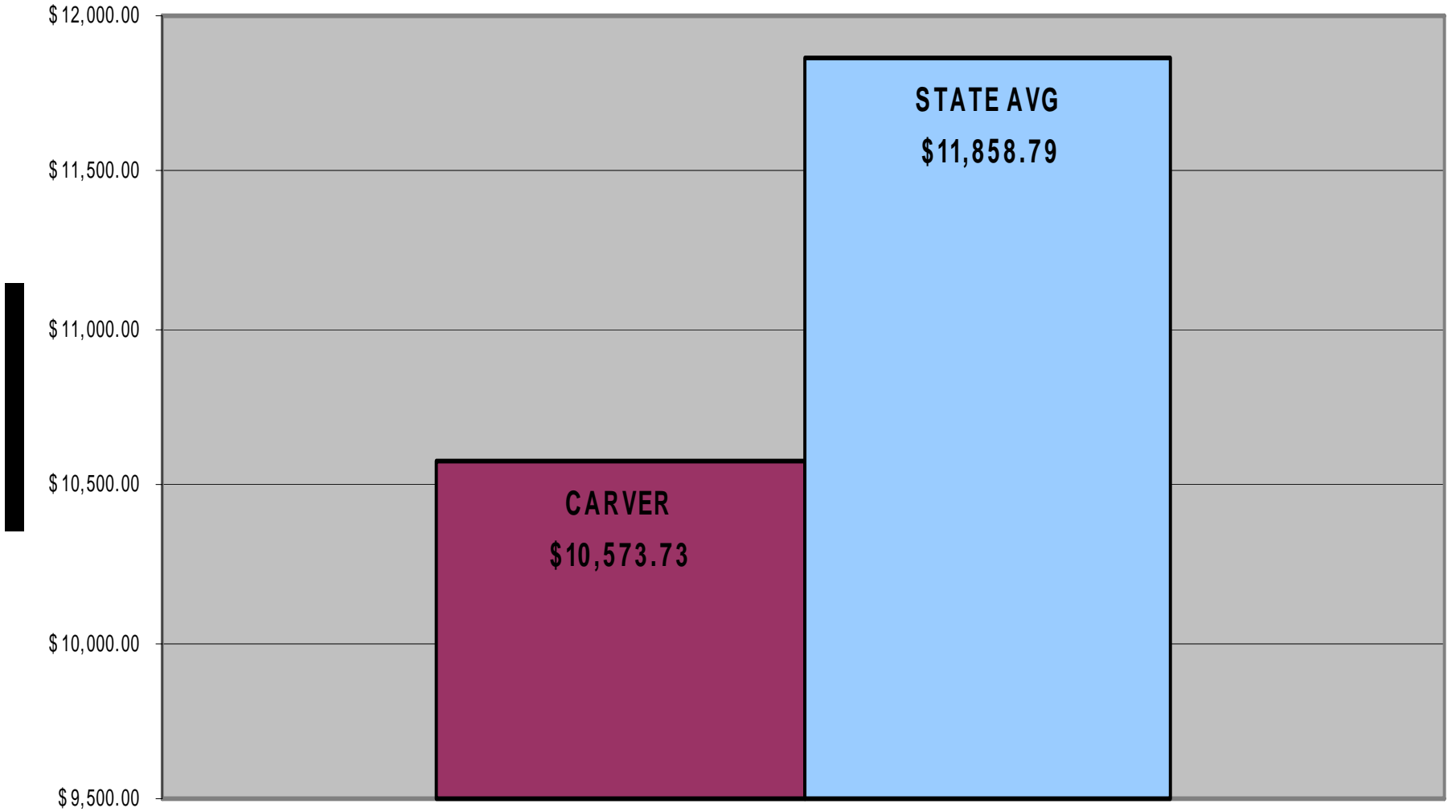
Of **24** South Shore districts, **14** offer at least some full-day programs

6 of those are free to all students

6 rely on a lottery or offer the program only to low-income status or special-needs children

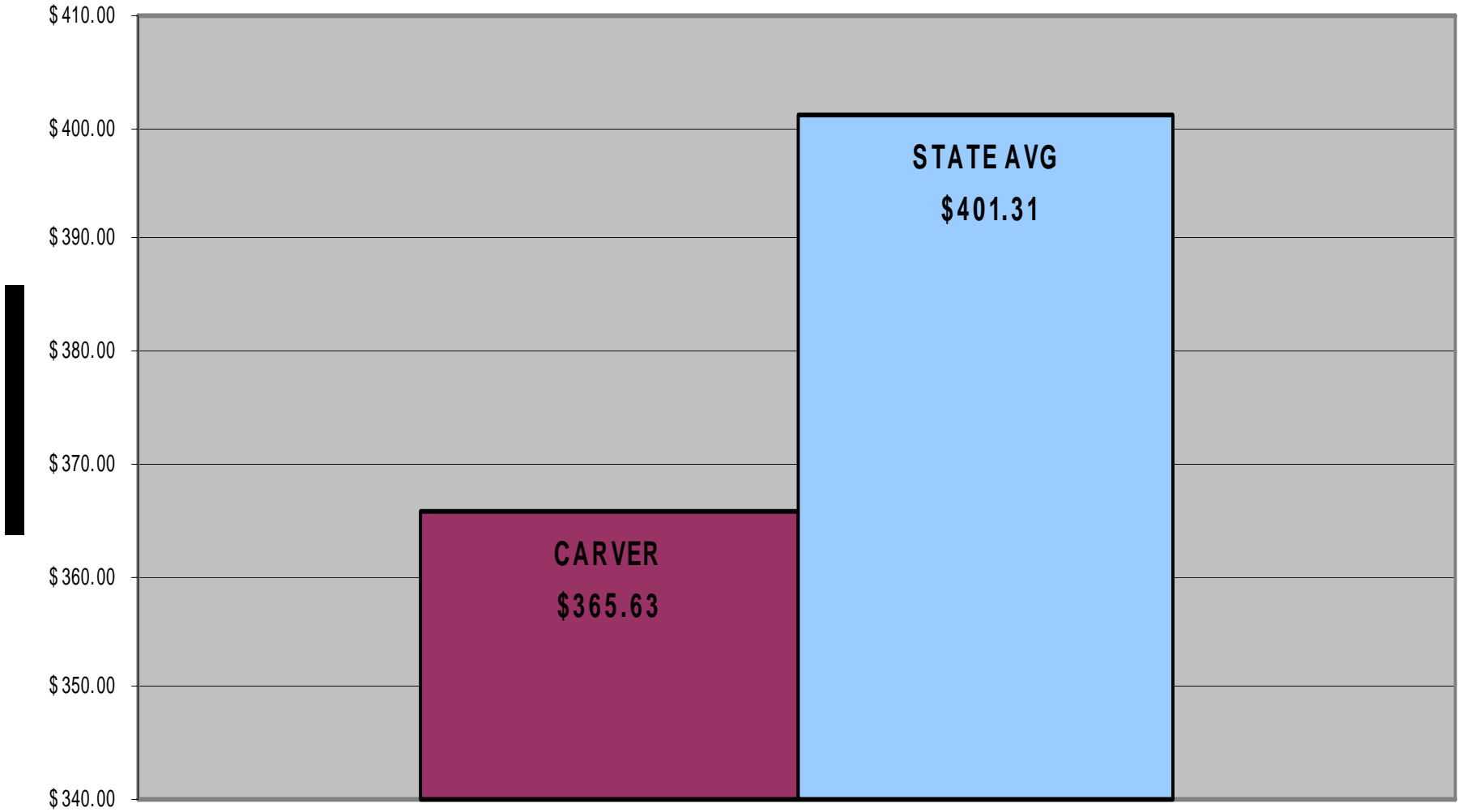
8 charge some tuition, up to \$4,000 per year

FY07 Per Pupil Expenditures - All Categories



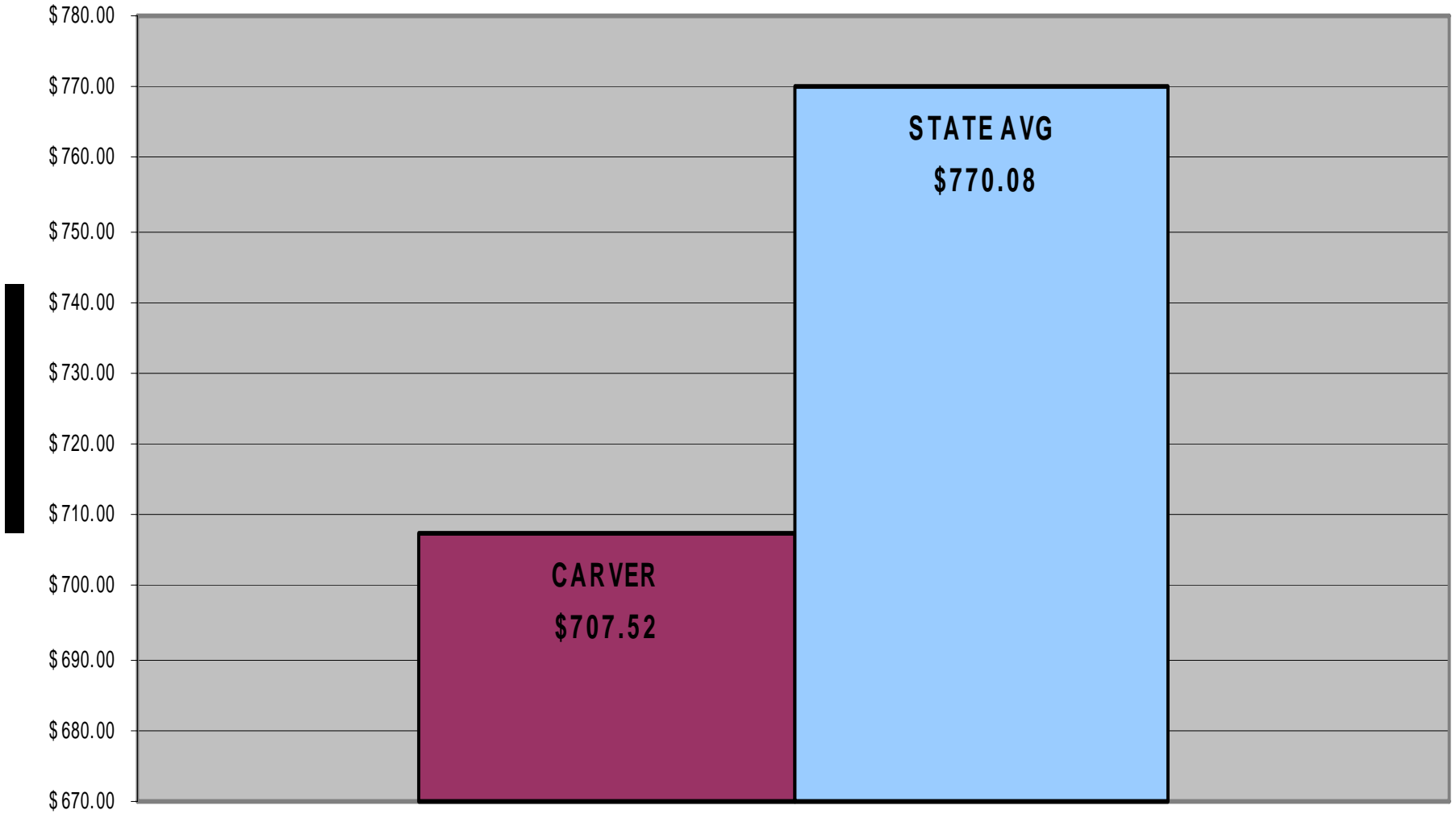
Carver's Total DESE Per Pupil Cost is 10.8% Below the State Average

FY07 Per Pupil Expenditures - Central Office Administration



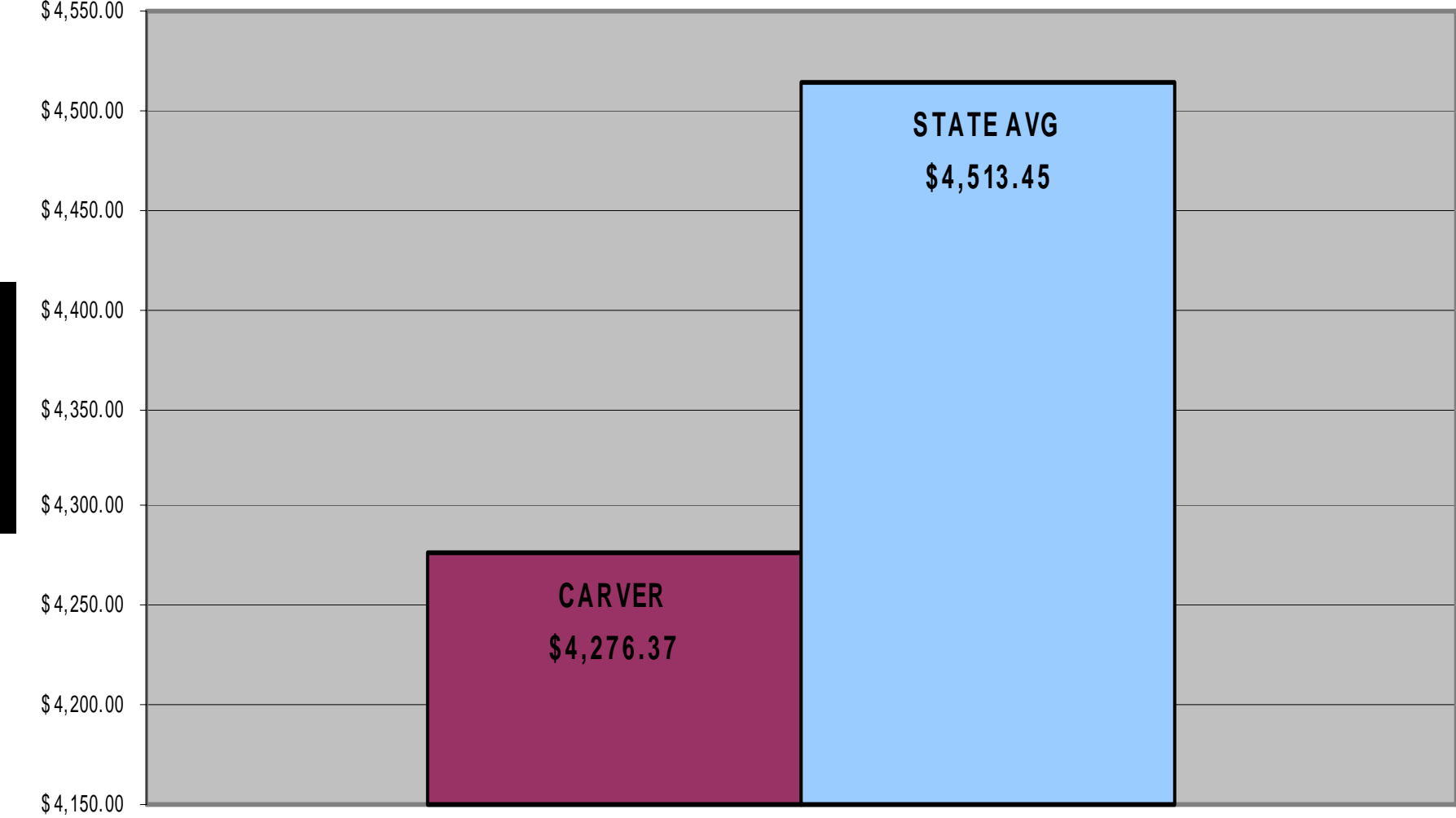
Carver's Administration Expenditure is 8.9% Below the State Average

FY07 Per Pupil Expenditures - Principals and Curriculum Directors



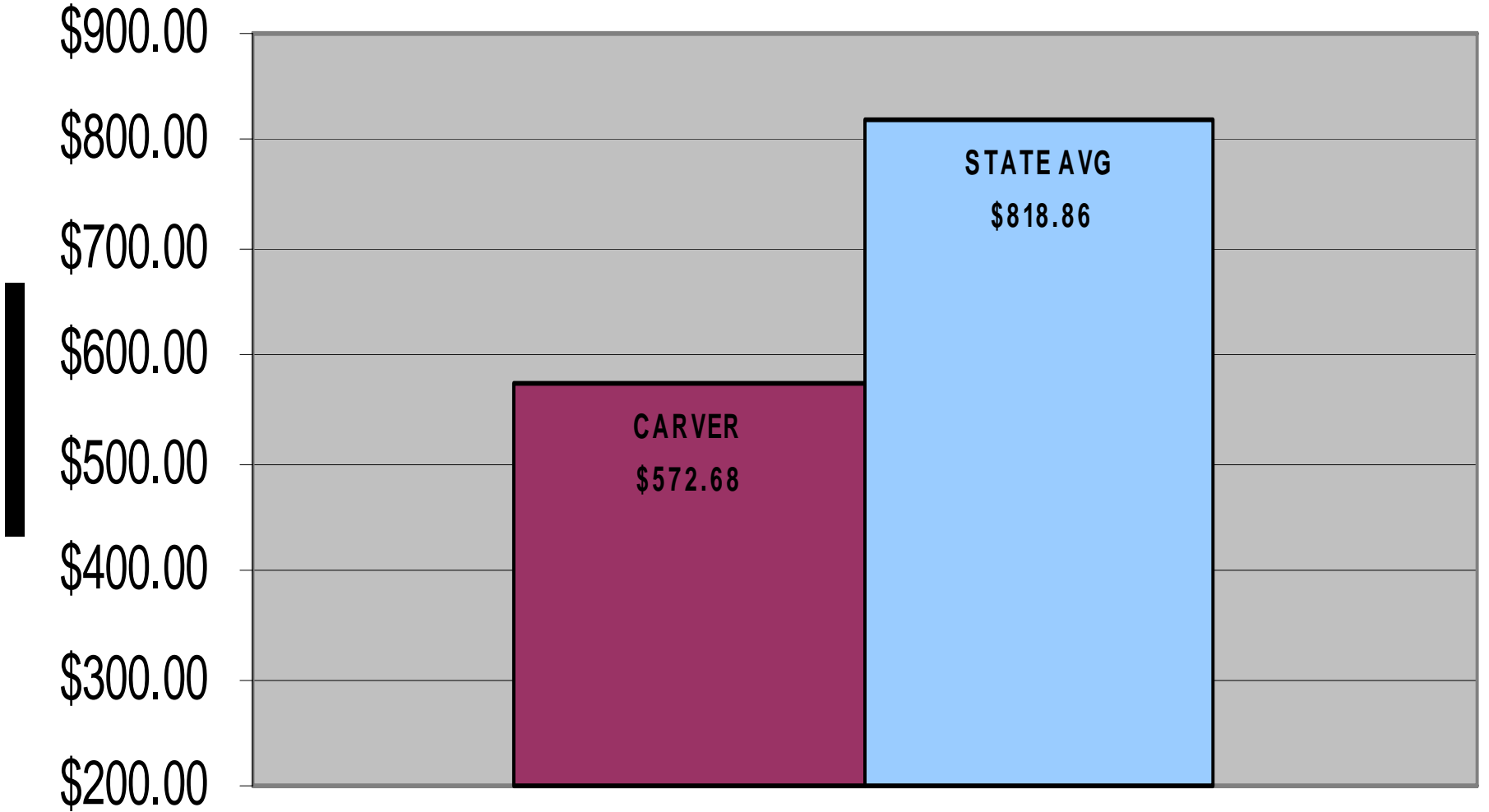
Carver's Instructional Leadership Expenditures are 8.1% Below the State Average

FY 07 Per Pupil Expenditures - Classroom & Specialists Teachers



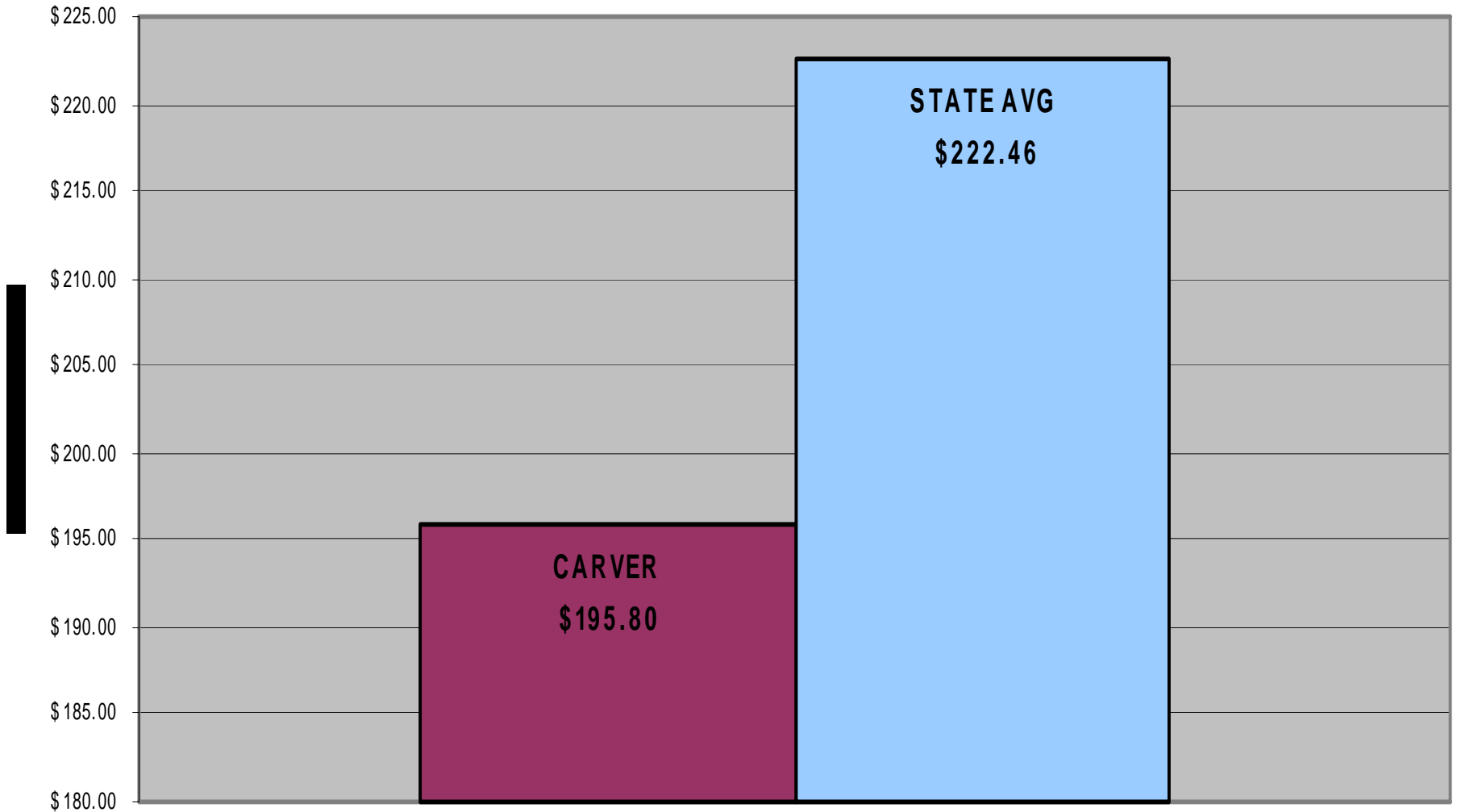
Carver's Teacher (Salary) Expenditures are 5.3% Below the State Average

FY07 Per Pupil Expenditures - Other Teaching Services



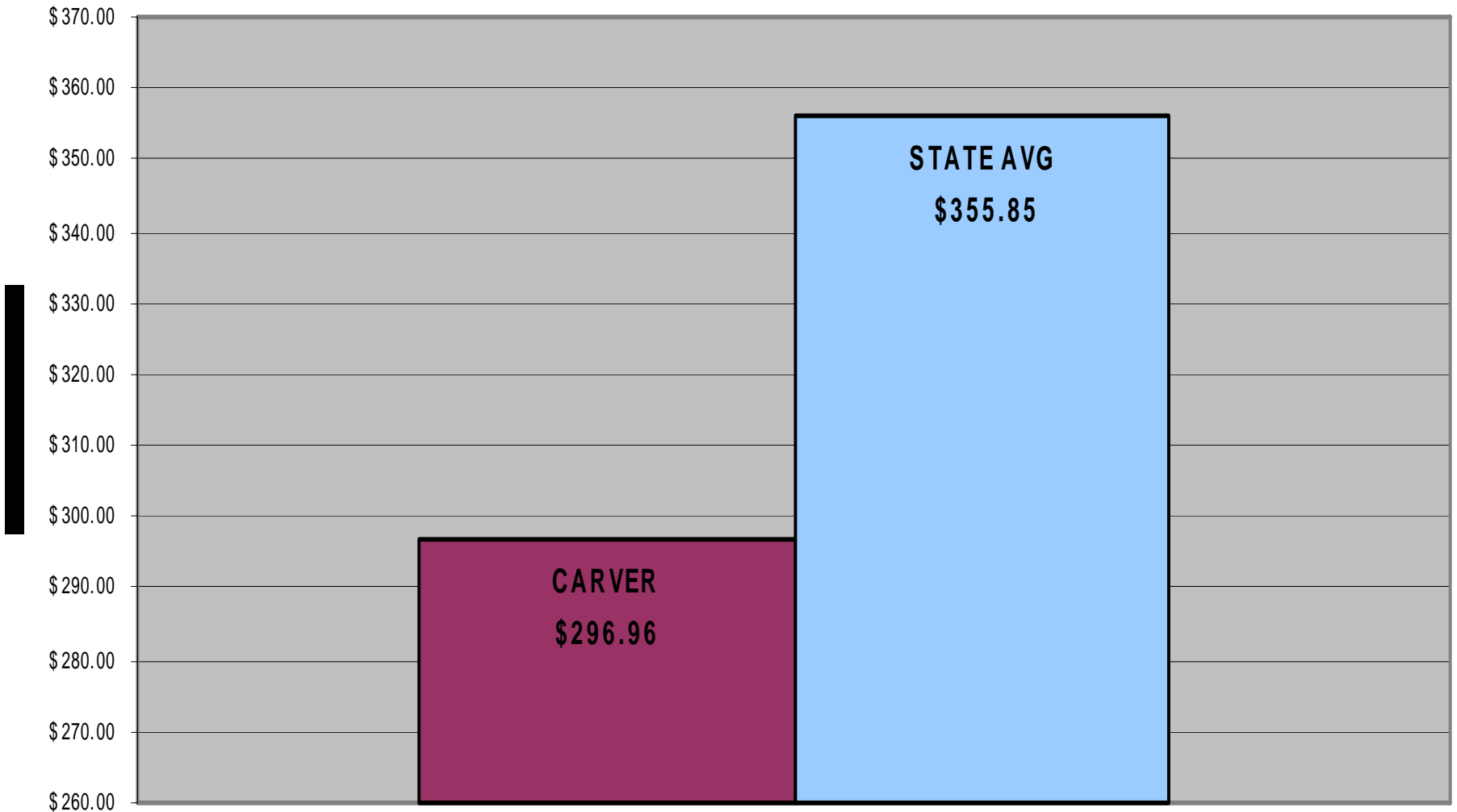
Carver's Other Teaching Services Expenditures are 30.1% Below the State Average

FY07 Per Pupil Expenditures - Professional Development



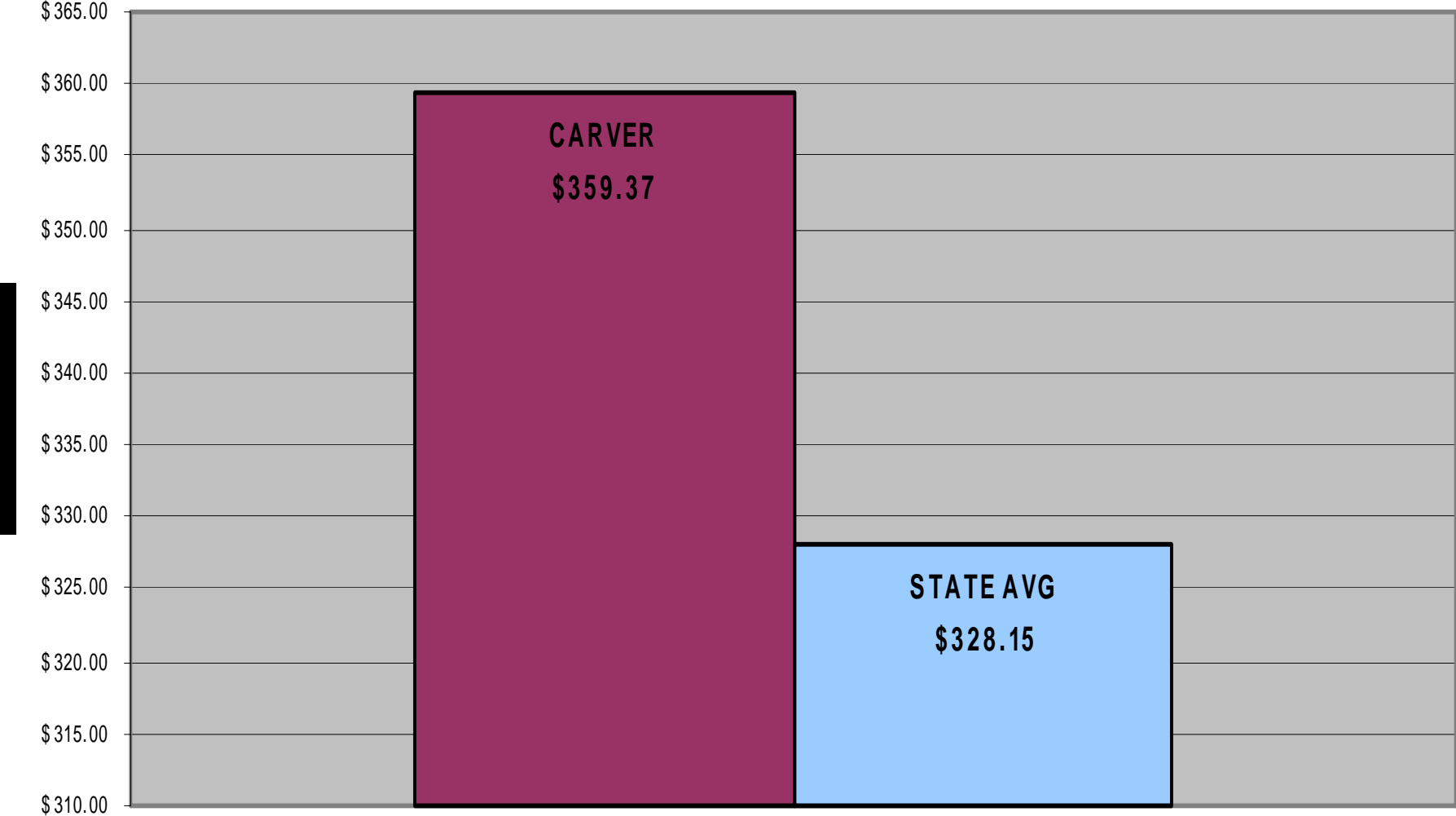
Carver's Professional Development Expenditure is 12% Below the State Average

FY07 Per Pupil Expenditures - Instructional Materials, Equipment & Technology



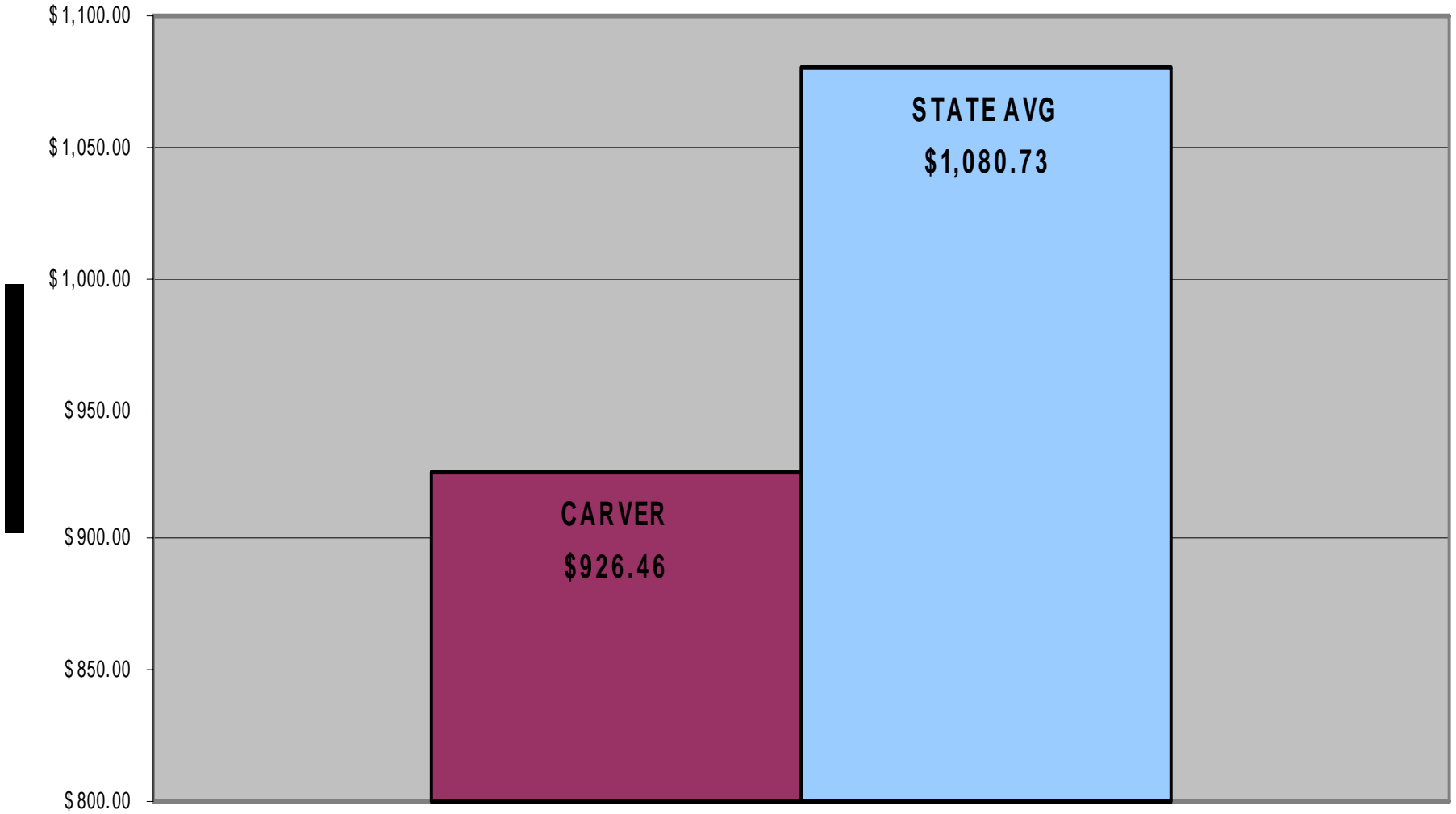
**Instructional Materials, Equipment and Technology Expenditures are
16.5% Below the State Average**

FY07 Per Pupil Expenditures - Guidance, Counseling & Testing



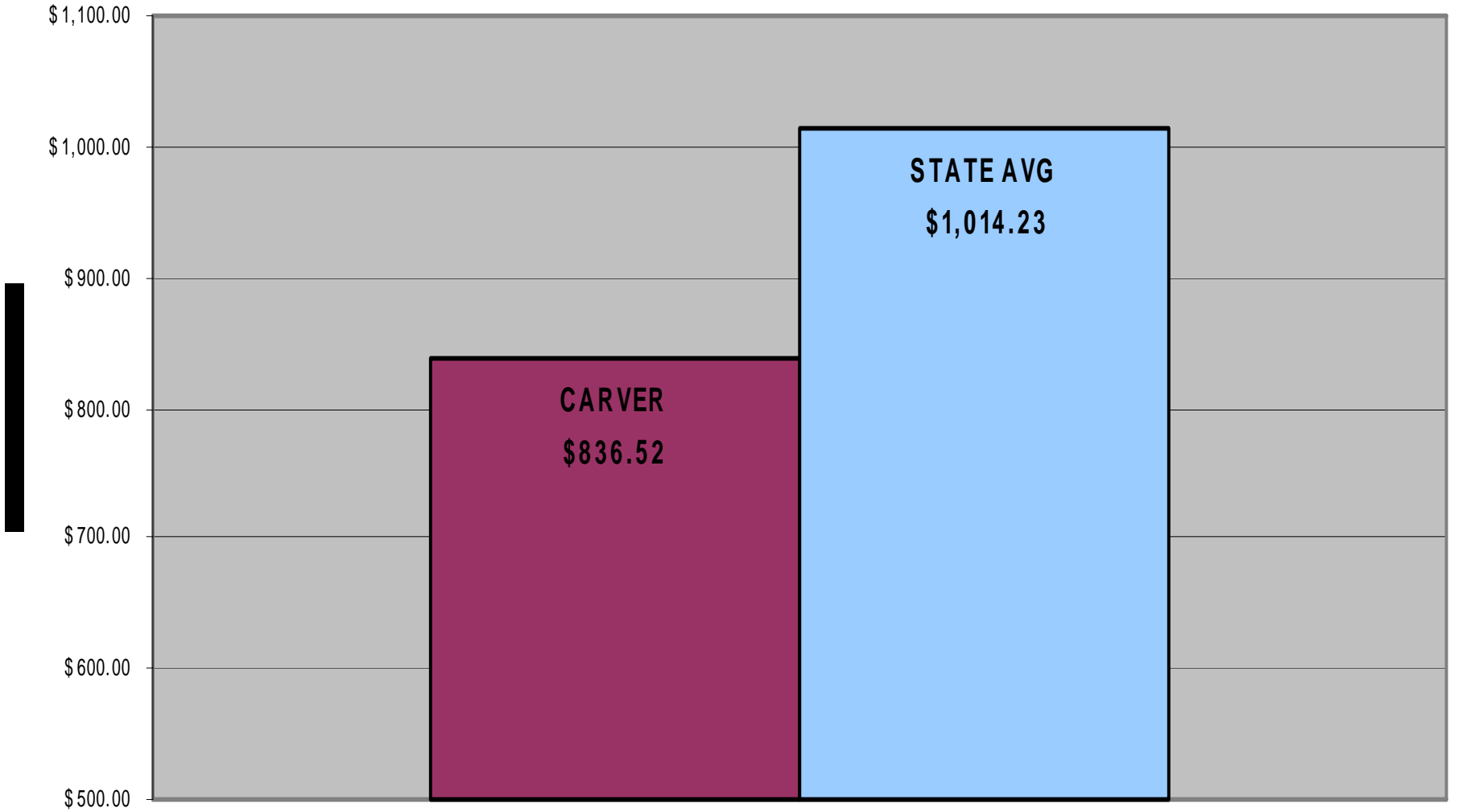
Carver's Guidance, Counseling and Testing Expenditures are 9.5% Above the State Average

FY07 Per Pupil Expenditures - Pupil Services



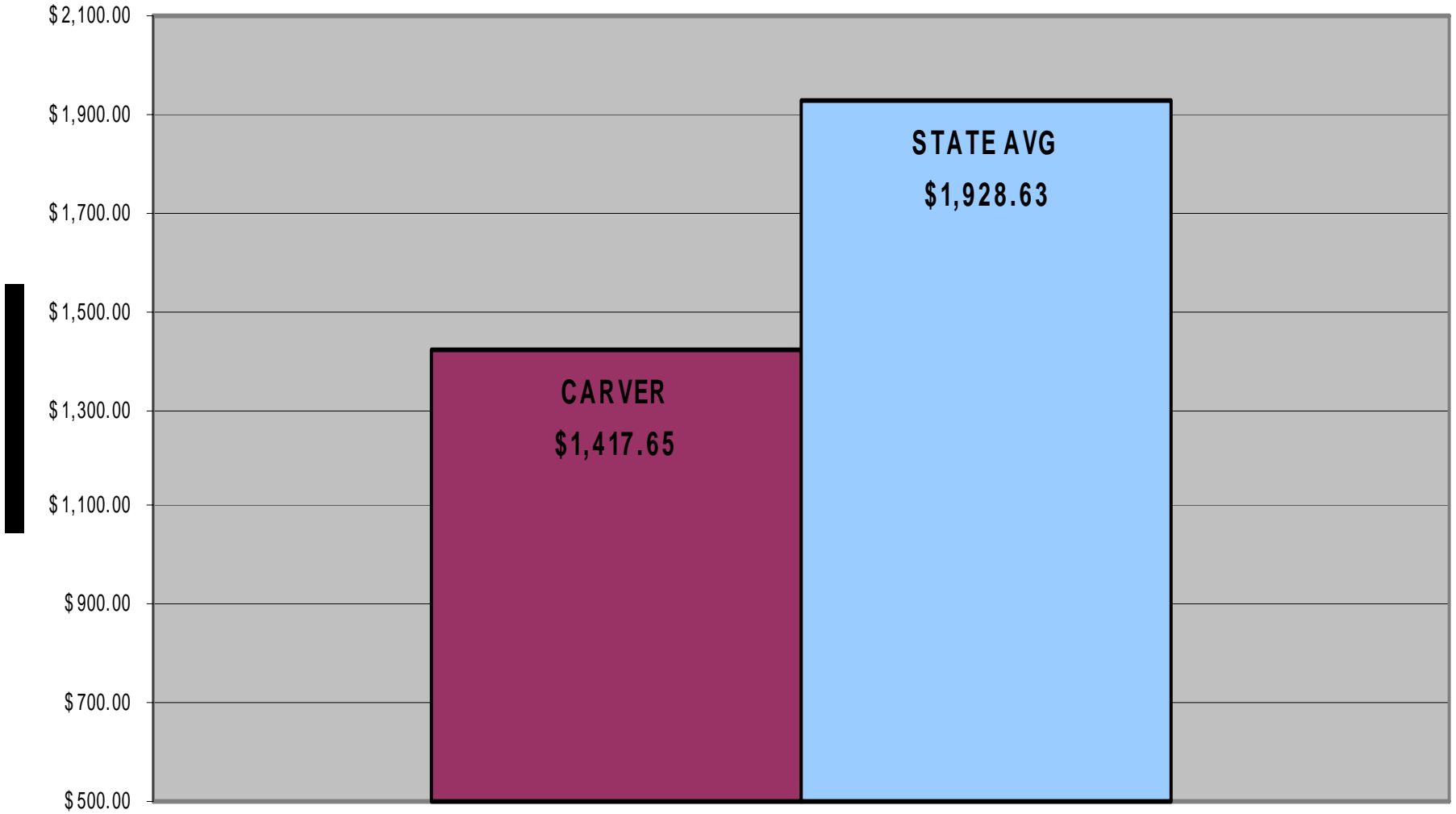
Carver's Pupil Service Expenditures are 14.3% Below the State Average

FY07 Per Pupil Expenditures - Operations and Maintenance



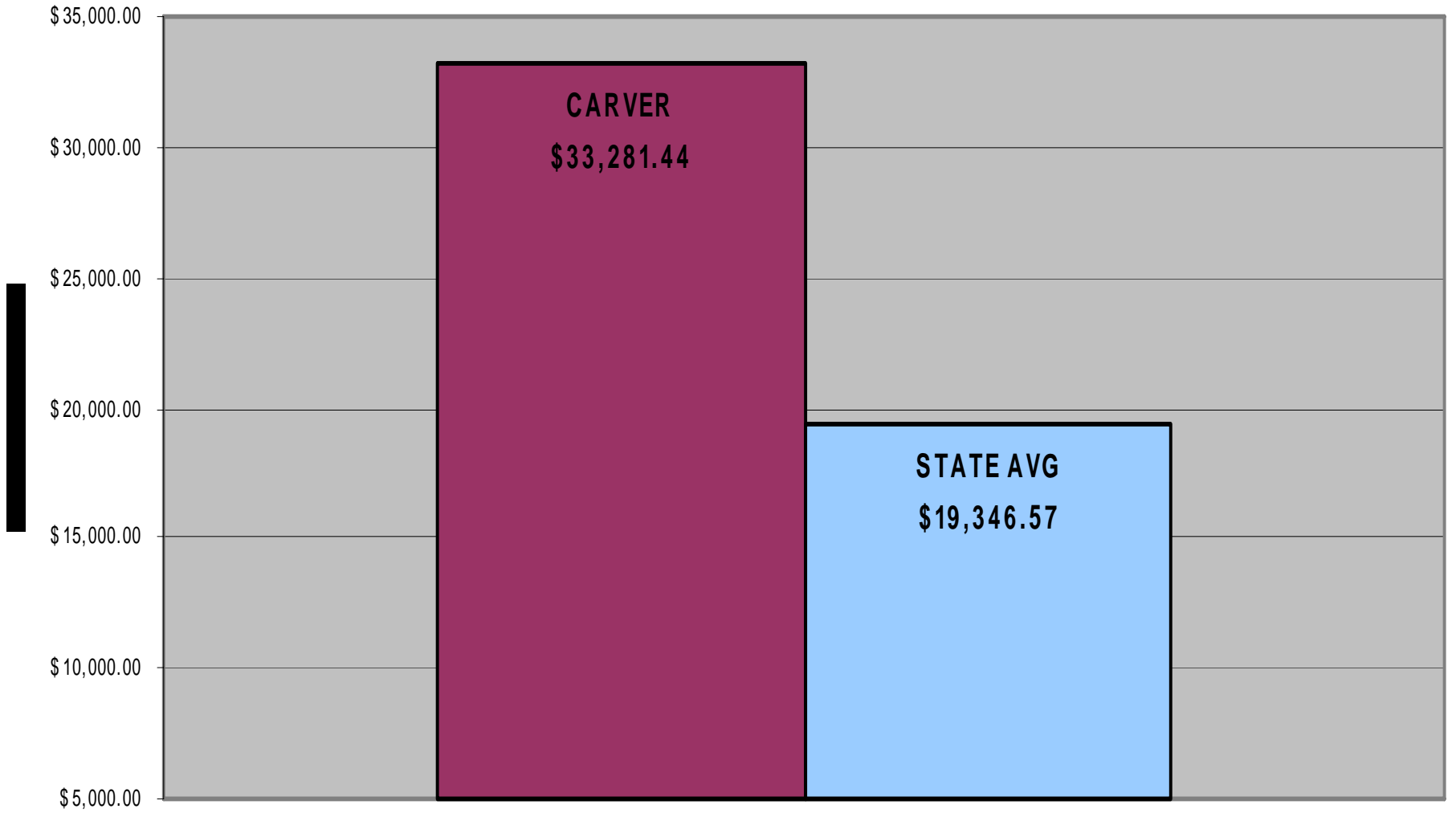
Carver's Operations & Maintenance Expenditures are 17.5% Below the State Average

FY07 Per Pupil Expenditures - Insurance, Retirement & Other Benefits



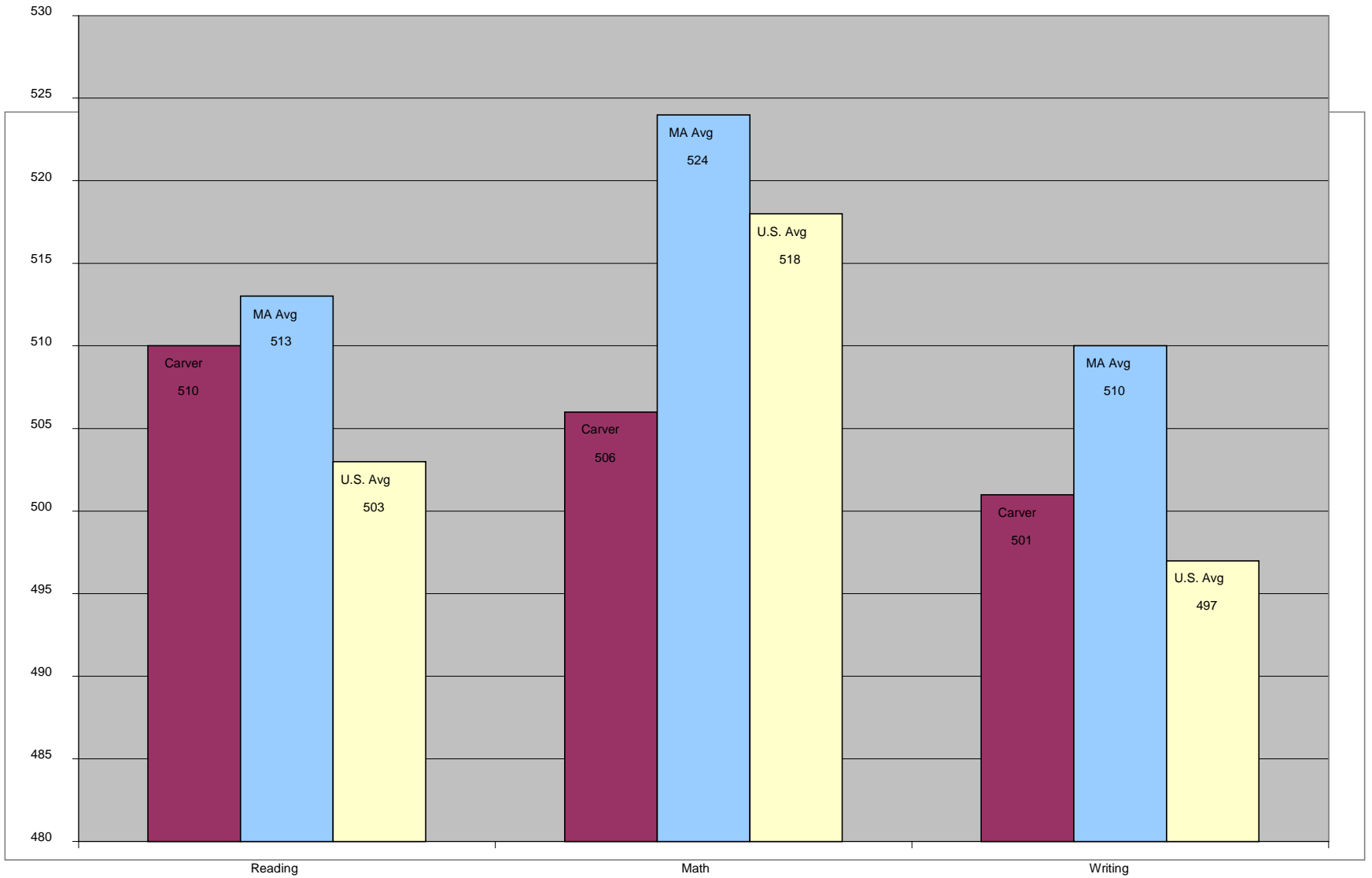
Retirement, Insurance and Other Benefits Expenditures are 26.5% Below the State Average

FY07 Per Pupil Expenditures - Out-of-District Expenditures

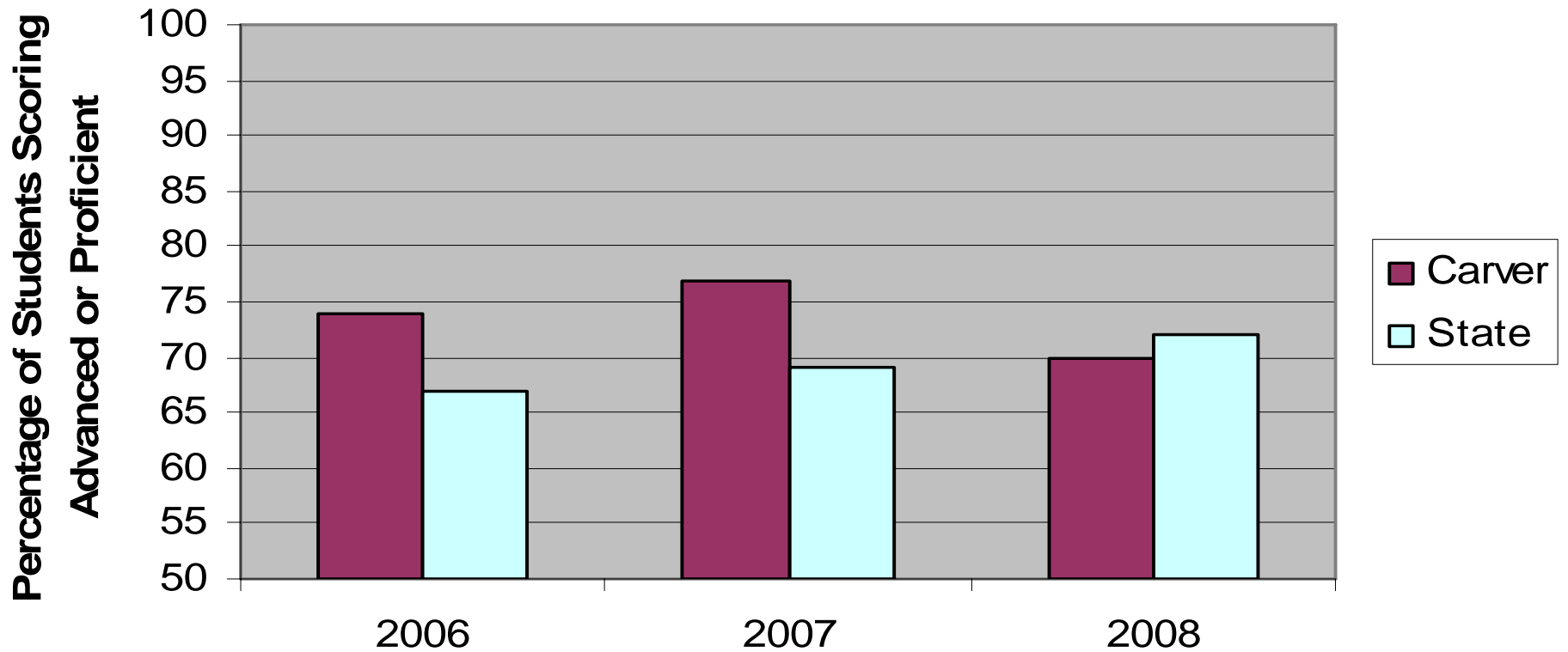


Out-of-District Placement Expenditures Are 72% Above the State Average

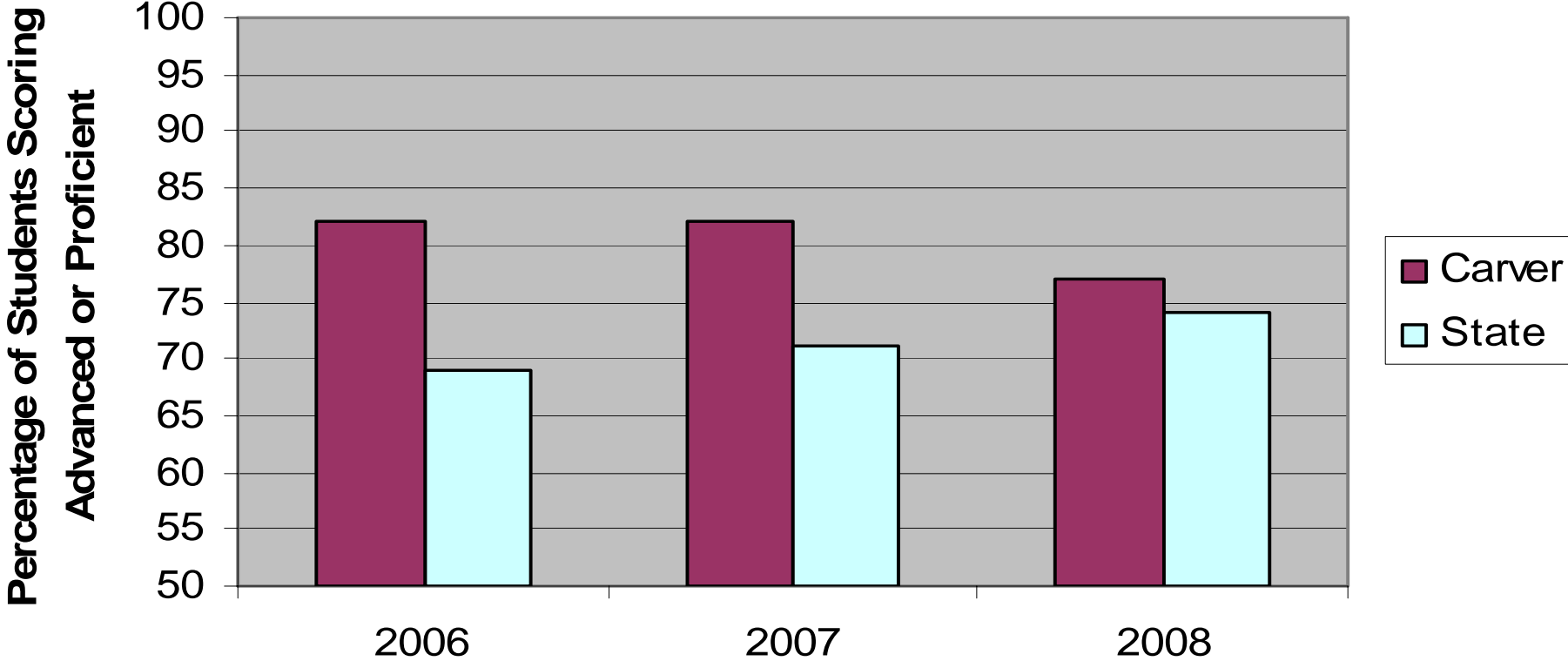
2005-06 SAT Scores



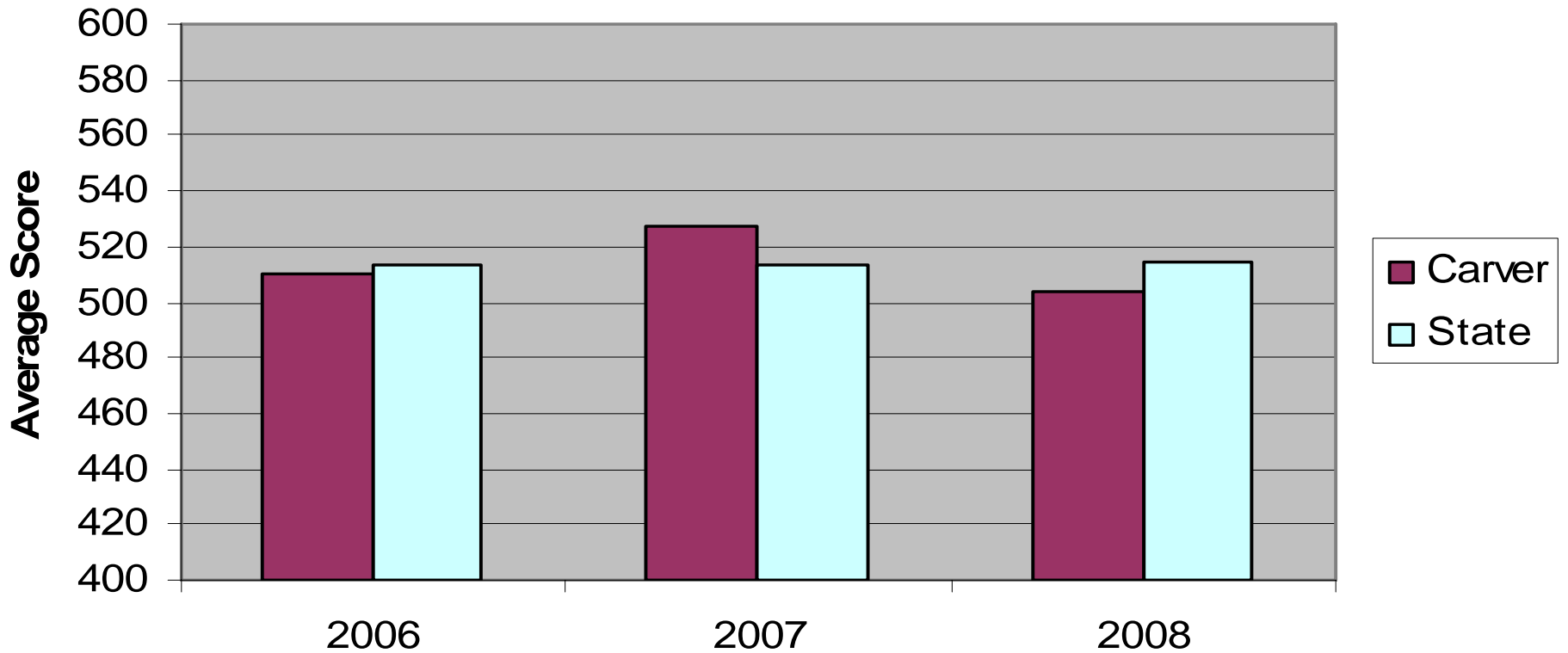
Academic Achievement: Mathematics MCAS (10th Graders)



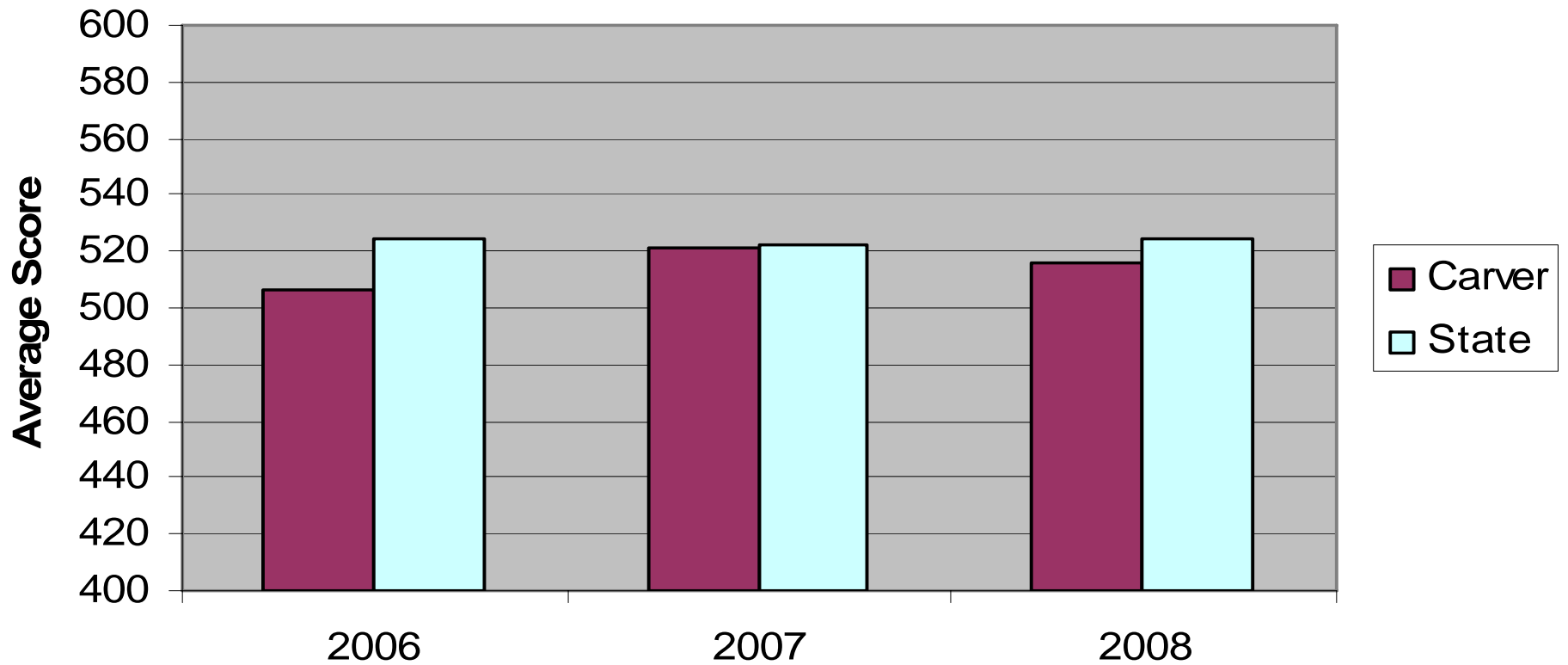
Academic Achievement: English Lang Arts MCAS (10th Graders)



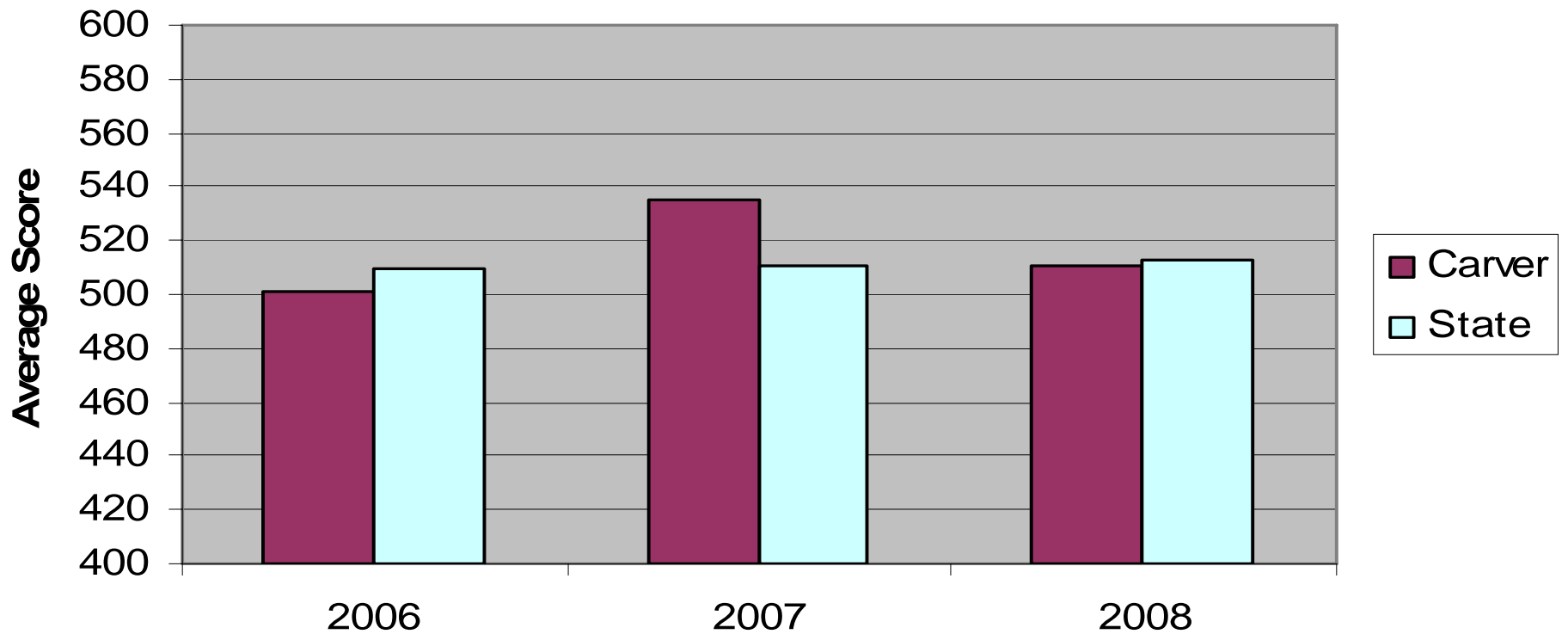
Academic Achievement: Critical Reading SAT



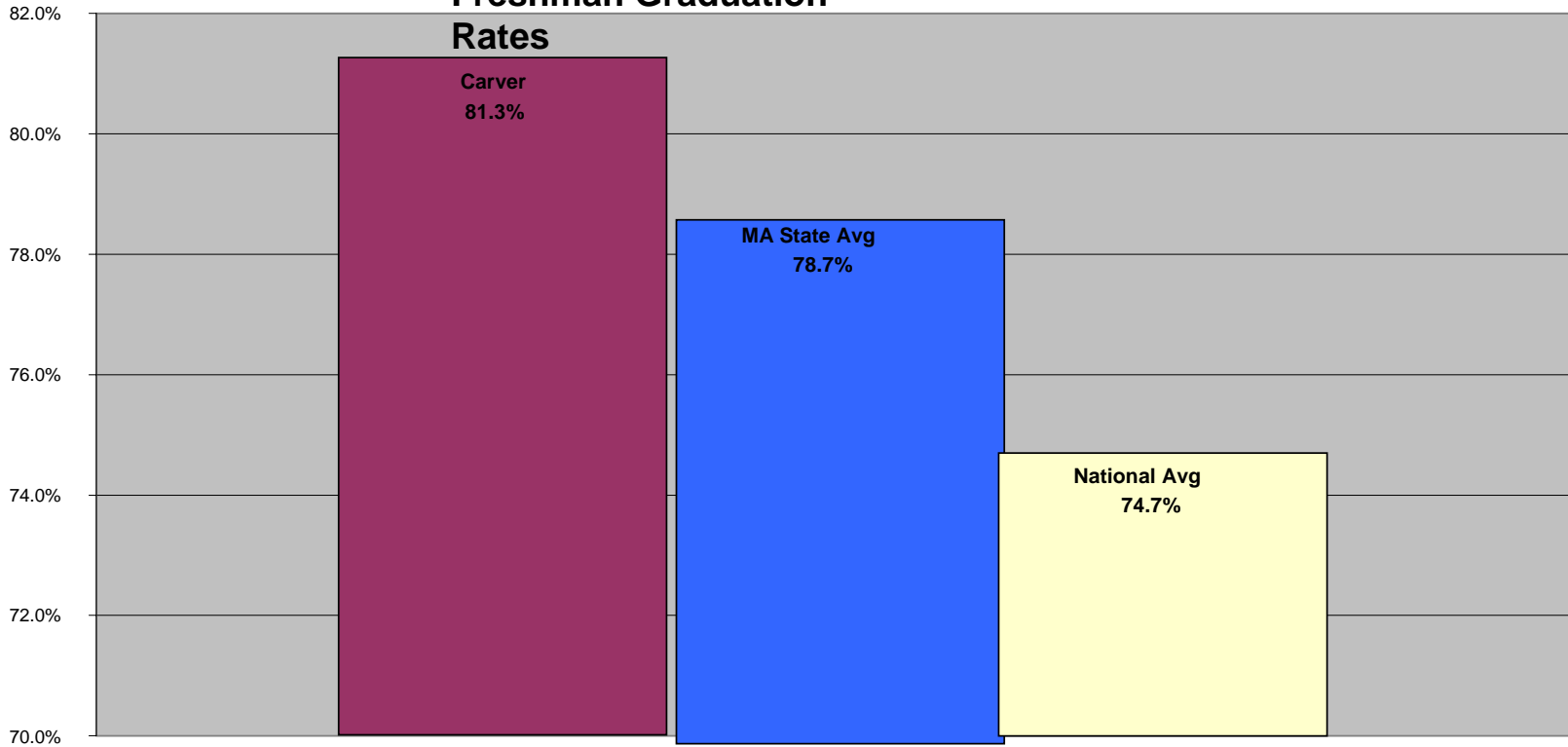
Academic Achievement: Mathematics SAT



Academic Achievement: Writing SAT

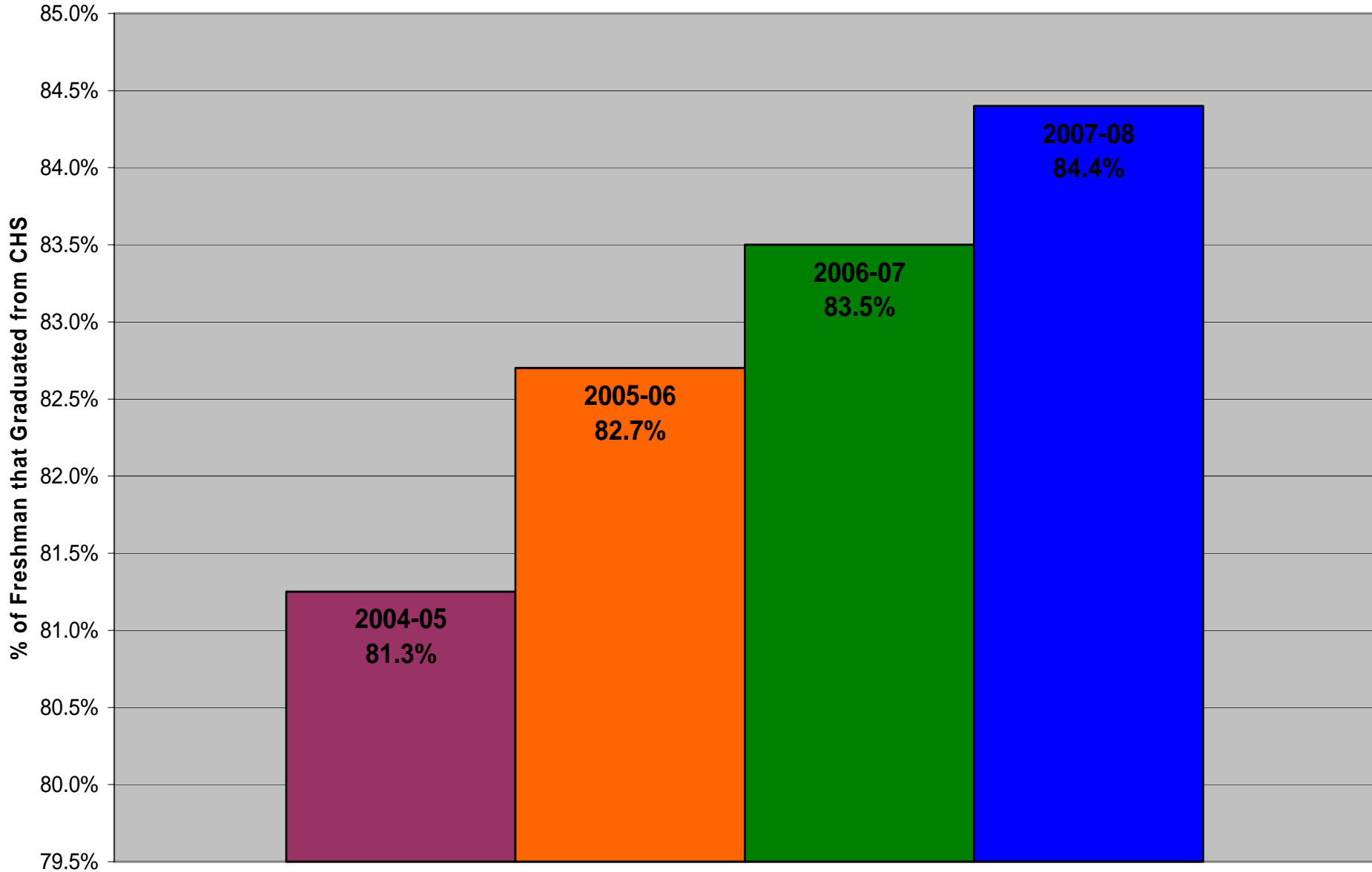


2004-05 Average Freshman Graduation Rates



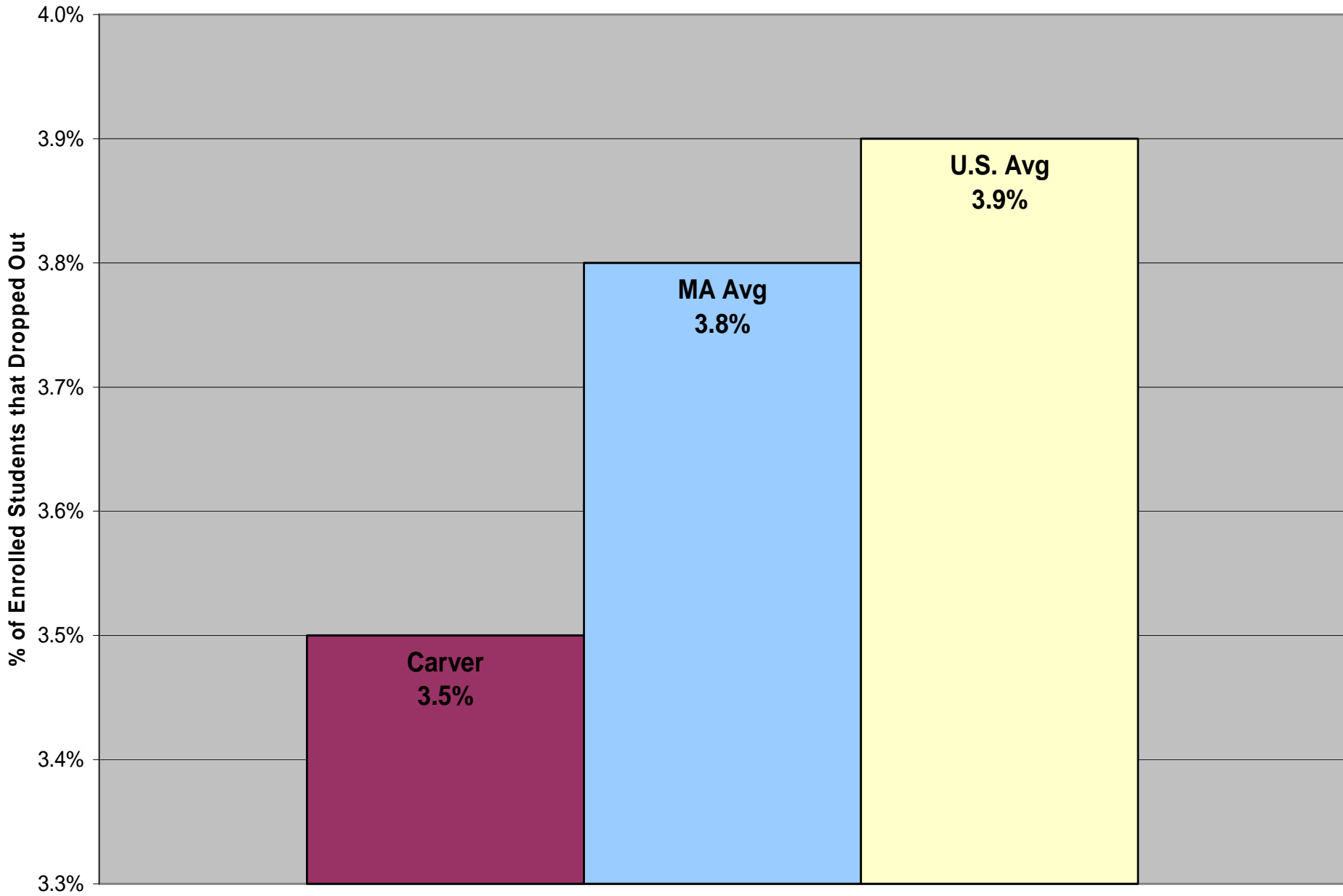
Sources: National Center for Education Statistics and Local Records filed with the DOE

Carver's Recent Graduation Rates

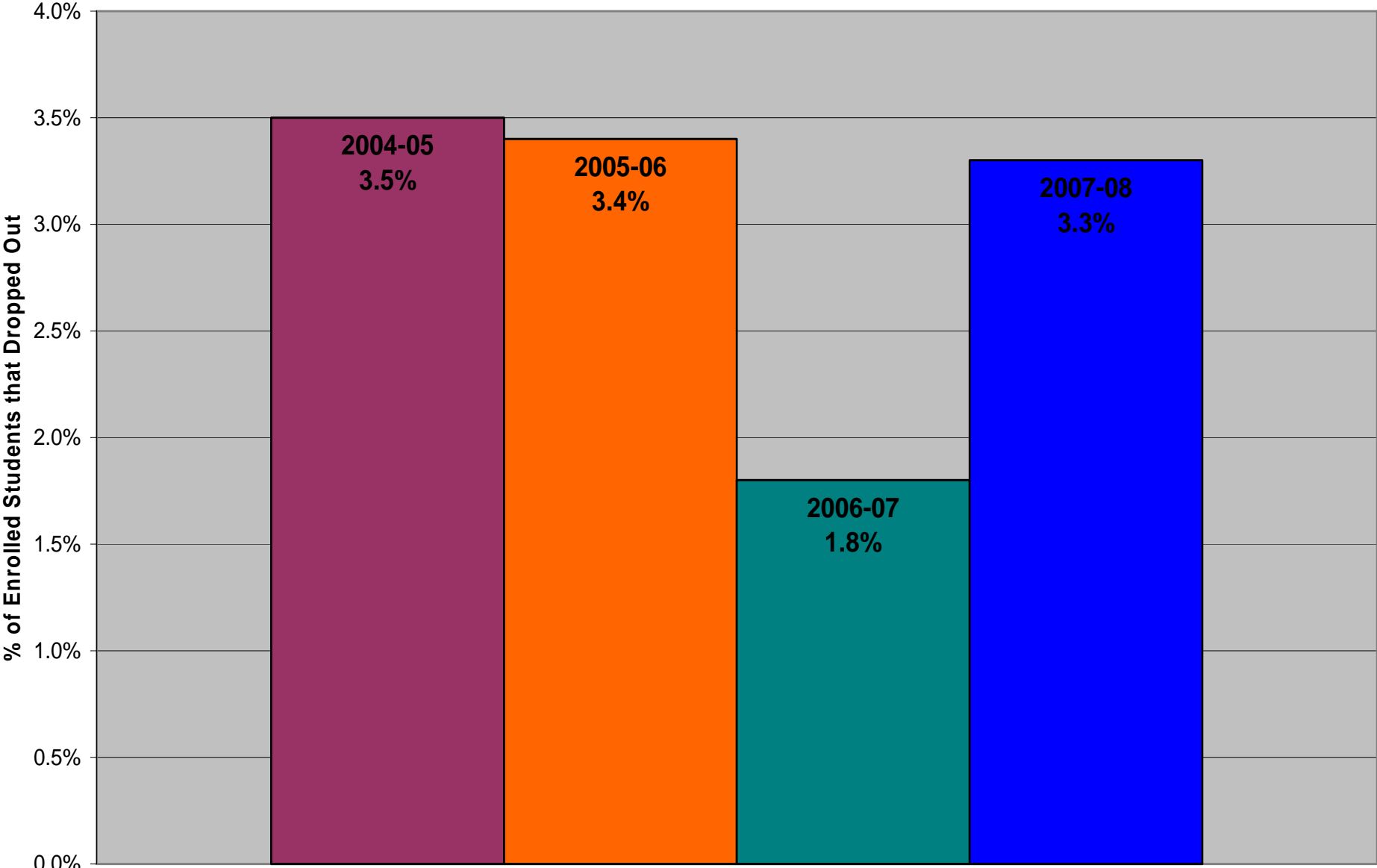


Source: Local Data

2004-05 High School Drop Out Rate



Carver's Four Latest Recent Dropout Rates



Local Data 2005-06, 06-07, & 07-08